

HAWKS					
PLAINVIEW OLD BETHPAGE					
POB	20:20				HOURS
20					20
DAKTRONICS					
0	DOWN	TO GO	BALL ON	QTR	0
T.O.L.	2	0	2	0	T.O.L.
PLAYER PENALTY			PLAYER PENALTY		
:			:		
:			:		
:			:		

MARIO V. COLLELUORI MEMORIAL FIELD



2020-2021 DISTRICT CALENDAR

Plainview-Old Bethpage Central School District • www.pobschools.org • 516.434.3000

A MESSAGE FROM THE SUPERINTENDENT

Welcome back to the 2020-21 school year! With such an abrupt end to the 2019-20 school year, I am looking forward to seeing the many smiling faces that will be filling our classrooms in September. I am aware that some are returning with great trepidation and concern. Our team has been planning since May for our September reopening. With the first priority being health and safety, we also have built a mental health and wellness system that will support all of our students. We have partnered with Northwell Health to provide services for our students in the area of mental health and we have written a K-12 curriculum that will teach our students about the building blocks of mental health and well-being: self management, relationships, and resource management in order to promote our students' growth in each of these critical areas.



Our theme for this year "Lighting the Way Forward" recognizes that we are emerging from a very difficult time and that we all will find ways to illuminate a way to move forward. Each of the students have his/her own goals and unique needs. Our incredible and talented staff are ready to meet the students where they are and move them forward.

Even though we closed our doors in March, learning and progress continued: we had a record number of students sitting for Advanced Placement examinations; community service ranged from collecting for Island Harvest to sewing face masks; students wrote letters to our first responders; and, a water well was built in Sudan as a result of our middle school students' multi-year project. Our graduates will move on to prestigious colleges and universities after creatively designing ways to celebrate their senior year. But most important will be the work we do to educate our students on how to be productive, civic-minded participants in this great country.

Plainview-Old Bethpage Schools will open with a new Mission Statement. This Mission Statement illustrates a renewed commitment to the ideals the community values: inclusion, diversity, empathy, curiosity, and social and emotional wellness. With the support of our teachers, administrators and Board of Education, each of our students will grow in these areas and become impactful citizens. Our schools will open with a keen eye on health and safety with many new protocols put in place to ensure our staff and students are healthy and safe. Our security vestibules are being installed, health screenings will be conducted daily, increased disinfecting will occur throughout the day, and training of staff on reducing the spread of COVID-19 will continue.

Performances, celebrations, and community collaboration will continue this year. While some may be virtual, others will offer an opportunity to enjoy in person. We invite you to enjoy the events published in our District calendar. Maintaining our commitment to engaging all of our learning partners can only happen with your continued feedback. Please share your ideas on accomplishing the District's Mission. Log on to the District website at www.pobschools.org to stay informed about the Plainview-Old Bethpage Schools.

With a heartfelt welcome back, I wish you a wonderful, healthy 2020-21 school year that has you reconnecting and looking forward.

Sincerely,
Dr. Mary T. O'Meara, Superintendent of Schools

Board of Education and Superintendent



SEATED:

Mr. Seth Greenberg, *Vice President*, Mrs. Debbie Bernstein, *President*,
Dr. Mary T. O'Meara, *Superintendent of Schools*

STANDING:

Mr. Gary Bettan, *Trustee*, Mrs. Tara Rock, *Trustee*, Mrs. Susan Stewart, *Trustee*
Mrs. Ginger Lieberman, *Trustee*, Mrs. Lauren Sackstein, *Trustee*

The Board of Education establishes policies and adopts regulations for the operation of the district's seven public schools. Its seven members serve without pay and are elected by the qualified voters of the district for a term of three years. Responsibility for administering Board policies is vested in the Superintendent.

The Board normally meets on the first and third Monday of each month at 7:45 pm in the Board Room at Howard B. Mattlin Middle School, B House, as designated in an advance schedule available to the public. All district residents are invited to attend and to participate in these meetings.

Board agendas and meeting minutes are available on the district website: www.pobschools.org

Guercio & Guercio, Attorney Jeanne Tyler, District Clerk

BOARD MEETINGS ARE SCHEDULED FOR:

**August 17; September 2, 14; October 5, 19; November 2, 16, 30; December 14;
January 11, 25; February 8, 22; March 1, 15, 24; April 14, 26;
May 10, 24; June 7, 21**

All residents are encouraged to attend.

Our School District

In 2020-2021, the Plainview-Old Bethpage Central School District will operate one high school, two middle schools and four elementary schools, with an approximate enrollment of 4892. Of the school system's employees, approximately 554 are professional staff, and 454 are support staff.

Our Mission

The mission of the Plainview-Old Bethpage Central School District is to prepare civic-minded students to productively participate in a diverse and ever-changing world as self-directed, confident, curious, respectful and empathetic learners.

We do this by providing the necessary resources and support to:

- create a safe, inclusive environment where all students feel a sense of belonging;
- meet each student's social, emotional, academic, and physical needs; and,
- engage our learning partners in active collaboration and communication.

Our Education Program

The Plainview-Old Bethpage educational program reflects the District's commitment to educating the whole child: academic, social, emotional, and physical. The educational programs are associated with institutions of higher learning, Columbia Teachers College for our elementary literacy program, Stanford and Brown University for our civics curriculum; Stony Brook University for our News Literacy and science research programs, and Hofstra University for our engineering program to name a few. Our curricula are rigorous and relevant, engaging students in meaningful learning and experiences that connect them to the world outside of the Plainview-Old Bethpage borders. With a focus on individual learning paths, we have developed special programs that meet the needs of each student.

As we embark on a new school year in the COVID-19 era, you will see a focus on transitions between schools with our new MS 101 curriculum and a HS Freshman Seminar program. Our middle schools will continue their work with Leader in Me and a K-12 Mental Health and Wellness curriculum has been developed for all of our students. Our schools are once again designated as "No Place for Hate" schools which support the District's new Mission Statement that includes a commitment on creating environments where "all students feel a sense of belonging."

Our K-8 program includes: STEAM and Discovery Lab experiences, coding, world languages, and robust music and visual art opportunities. Our high school program allows the students to follow unique paths that include Advanced Placement and college-credit bearing courses, vocational studies, business experiences, life skills, and exceptional music, theatre, physical education, and art courses. Our academic program, along with the outstanding extra and co-curricular opportunities, provide our students with a fulfilling educational experience. As a result, the majority of our students graduate with Advanced Regents diplomas and move on to select, four-year colleges.

The District's investment in the professional growth of our teachers and administrators ensures students are working with talented and knowledgeable professionals. Our staff's participation in professional organizations, along with their advanced degrees, allows Plainview-Old Bethpage Central School District to ensure that our students receive exceptional instruction from highly trained professionals. The commitment to programs, research, and professional development, coupled with the incredible support of our learning partners, is what makes the Plainview-Old Bethpage Central School District a distinguished District where our students thrive.

Our Budget

The school budget is reviewed and approved by the Board of Education, and submitted to district voters after public hearings. Qualifications for voting and registration are made public in advance through school district publications distributed to all residents. Our Budget Vote will take place on May 18, 2021.

Any questions regarding our budget should be directed to Mr. Richard Cunningham at (516) 434-3050.

Calendar Index

Administrative Offices.....	38	Our Mission.....	3
Adult Education Program	34	Our Radio Station	35
Annual Asbestos Notification.....	33	Our School District	3
Art Education	34	Parent-Teacher Organizations.....	35
Athletic Booster Club.....	35	Parking on School Grounds.....	33
Attendance Policy	29	PE, Health, Athletics and Recreation	34
Board of Education and Superintendent	2	Pesticide Notification	33
Board of Education Meeting Dates.....	2	Photographs	35
Bus Transportation	26	POB Public Library	36
Cafeteria.....	30	Privately Conducted Activities, Trips and College Tours.....	33
Chain of Communication.....	37	Prohibited Student Conduct.....	28
Child Abuse and Maltreatment.....	32	Project Challenge.....	34
Child Care Program.....	30	Project Challenge Parent Association	34
Child Find Statement	32	PTA Council Executive Board, 2020-2021	36
Class Assignments and Testing on Religious Holidays	30	PTA Unit Presidents, 2020-2021.....	36
Code of Conduct	26	Public Conduct on School Property.....	28
Communicating with Parents	29	Pupil Personnel Services.....	33
Community Organizations.....	36	Questions and Concerns	36
Dangerous Instruments and Weapons in School	31	Religious Holidays	39
Delayed School Openings	38	Reporting Violations.....	28
Disciplinary Consequences.....	28	School Hours	38
Discipline of Students with Disabilities.....	28	Senior Citizens.....	35
District Directory.....	38	Statement on Sexual Harassment	31
District Publications.....	35	Student Activities	26
Emergency Procedures	30	Student Dress Code	27
Emergency School Closings	38	Student Registration.....	26
Every Student Succeeds Act (ESSA).....	33	Students Rights.....	27
Half-Day Program	30	Students' Record Policy	26
Health Services and Guidelines.....	32	Substance Use/Abuse Policy.....	31
Holocaust/Genocide Studies Center.....	35	The 6-Day Cycle.....	4
Mental Health & Wellbeing at POB	39	Title IX Committee Mission Statement	32
MAPOB.....	34	Use of School Building and Grounds.....	32
Music Education.....	34	Visitors to the Schools.....	28
Non-Discrimination Regulations	31	Vocational Education.....	34
Our Budget.....	3	Voter Qualifications.....	33
Our Education Program.....	3	Working Papers	33

August 2020

All calendar events are subject to change based upon NYS reopening guidance and regulations.

MONDAY	TUESDAY	WEDNESDAY	THURSDAY	FRIDAY
10 SCHOOL CLOSED	11 SCHOOL CLOSED	12 TRANSPORTATION PORTAL DAY SCHOOL CLOSED	13 SCHOOL CLOSED	14 SCHOOL CLOSED
17 Board of Ed. Mtg., 7:45pm SCHOOL CLOSED	18 SCHOOL CLOSED	19 PORTAL DAY Kindergarten Tea, 6:30pm @ TBD SCHOOL CLOSED	20 SCHOOL CLOSED	21 SCHOOL CLOSED
24 V/JV Fall Sports Begins V/JV Football Only- Physicals & Clearances, 7:30-11am @ HS SCHOOL CLOSED	25 HS Gr. 12 Operation Apply, 8am MMS/POBMS Gr. 7/8 Locker Move-In, 9am-12pm V/JV All Athletes- Clearances, 11am-3pm @HS SCHOOL CLOSED	26 V/JV All Athletes- Physicals & Clearances, 7:30-11am @ HS POBMS Gr. 5 Orientation, 8am MMS/POBMS Gr. 5/6 Locker Move-In, 9am-12pm SCHOOL CLOSED	27 SCHOOL CLOSED	28 HS Gr. 9 Orientation, 10am SCHOOL CLOSED
HS YEARBOOK PORTRAITS				



The 6-Day Cycle

Our elementary schools operate on a 6-day cycle for “specials.” This means that your child will attend art, music, library, language, and physical education classes once (except for physical education which meets twice) every 6 days. For example, your child’s schedule might look like this:

- Day 1 – art
- Day 2 – library
- Day 3 – physical education
- Day 4 – music
- Day 5 – language
- Day 6 – physical education

The schedule of days is noted on this calendar.

September 2nd is Day 1, September 3rd is Day 2, etc. Only days in which school is in session are so designated. If schools are closed because of snow, the days will continue as printed in the calendar. For example, if schools are closed for snow on Day 3, when school resumes the next day, it will be Day 4. The Make-up snow day would be Day 3.

September 2020

“Often when you think you’re at the end of something, you’re at the beginning of something else.” –Fred Rogers

SUNDAY	MONDAY	TUESDAY	WEDNESDAY	THURSDAY	FRIDAY	SATURDAY
30	31 V/JV Fall Sports Begin V/JV All Athletes- Clearances, 8-11am @ HS MMS Sports- Physicals & Clearances, 1-2:15pm POBMS Sports- Physicals & Clearances, 2:30-3:45pm SCHOOL CLOSED	1 SUPERINTENDENT’S CONFERENCE DAY SCHOOL CLOSED	2 DAY 1 K-12 First Day of School Board of Ed. Mtg., 7:45pm	3 DAY 2 HS Freshman Welcome, pd. 10 HS Senior BBQ MMS/POBMS Fall Sports Info. Mtg., 3pm HS Safe Teen Driving Program, 7pm	4 SCHOOL CLOSED	5

6	7 SCHOOL CLOSED	8 DAY 3 MS Fall Sports Begin PTA Pres/Supt. Mtg., 9:30am SEPTA, 7:30pm @ POBMS	9 DAY 4 HS Gr. 9 Independent Research Parent Mtg., 6:30pm HS Back to School Night, 7pm	10 DAY 5 MMS/POBMS Gr. 5 1:1 Parent Mtg., 6:30; Gr. 5/6 Back to School Night, 7pm HS Gr. 12 Guidance Info Night, 7pm HS PICTURE DAYS	11 DAY 6 PAS Back to School Picnic (Rain Date 9/18)	12 ACT Away																																																																																											
13	14 DAY 1 Board of Ed. Mtg., 7:45pm	15 DAY 2 HS Safe Teen Driving Program, 7pm	16 DAY 3 SR PTA, 9:30am POB Athletic Booster Club Mtg., 7:30pm @ HS JJP/OB PTA, 7:30pm	17 DAY 4 MMS/POBMS Club Fair, Pd. 9 HS Deadline to drop a class to add lunch (Gr. 9-12) HS Gr. 12 Operation Apply New York Mets Marching Band Day, 4pm @ Citi Field MMS/POBMS Gr. 7/8 Back to School Night, 7pm	18 DAY 5 (R) OB Picture Day MMS Gr. 5 BBQ	19 (R)																																																																																											
20 (R)	21 DAY 6 Arts-In-Ed. Mtg., 9:30am MMS PTA, 7:30pm	22 DAY 1 ELEM. Back to School Night; (K, 6-6:30pm; Gr. 1, 6:30-7pm; Gr. 2, 7-7:30pm; Gr. 3, 7:30-8pm; Gr. 4, 8-8:30pm)	23 DAY 2 POB ENL Parent Tea, 7pm @ HS	24 DAY 3 HS Club Fair, pd. 10 & 11 HS Deadline to drop a class to add another (Gr. 9-12) Security/Trans. Committee, 9:30am PAS PTA 9:30am HS Financial Aid Night, 7pm POBMS PTA, 7:30pm	25 DAY 4 JJP Back to School Event, 6pm OB Movie on the Lawn (Rain date 10/2)	26 SAT Away																																																																																											
27 (R)	28 (R) SCHOOL CLOSED	29 DAY 5 HS Sr. Bleacher Photo, 1:49pm HS PTA, 7:30pm	30 DAY 6 Athletic Council Mtg., 9:30am @ HS Audit Committee Mtg., 7pm @ BOE PTA Council, 7:30pm @ HS		<p>AUGUST 2020</p> <table border="1"> <tr><td>S</td><td>M</td><td>T</td><td>W</td><td>T</td><td>F</td><td>S</td></tr> <tr><td></td><td></td><td></td><td></td><td></td><td></td><td>1</td></tr> <tr><td>2</td><td>3</td><td>4</td><td>5</td><td>6</td><td>7</td><td>8</td></tr> <tr><td>9</td><td>10</td><td>11</td><td>12</td><td>13</td><td>14</td><td>15</td></tr> <tr><td>16</td><td>17</td><td>18</td><td>19</td><td>20</td><td>21</td><td>22</td></tr> <tr><td>23</td><td>24</td><td>25</td><td>26</td><td>27</td><td>28</td><td>29</td></tr> <tr><td>30</td><td>31</td><td></td><td></td><td></td><td></td><td></td></tr> </table>	S	M	T	W	T	F	S							1	2	3	4	5	6	7	8	9	10	11	12	13	14	15	16	17	18	19	20	21	22	23	24	25	26	27	28	29	30	31						<p>OCTOBER 2020</p> <table border="1"> <tr><td>S</td><td>M</td><td>T</td><td>W</td><td>T</td><td>F</td><td>S</td></tr> <tr><td></td><td></td><td></td><td></td><td></td><td></td><td>1 2 3</td></tr> <tr><td>4</td><td>5</td><td>6</td><td>7</td><td>8</td><td>9</td><td>10</td></tr> <tr><td>11</td><td>12</td><td>13</td><td>14</td><td>15</td><td>16</td><td>17</td></tr> <tr><td>18</td><td>19</td><td>20</td><td>21</td><td>22</td><td>23</td><td>24</td></tr> <tr><td>25</td><td>26</td><td>27</td><td>28</td><td>29</td><td>30</td><td>31</td></tr> </table>	S	M	T	W	T	F	S							1 2 3	4	5	6	7	8	9	10	11	12	13	14	15	16	17	18	19	20	21	22	23	24	25	26	27	28	29	30	31
S	M	T	W	T	F	S																																																																																											
						1																																																																																											
2	3	4	5	6	7	8																																																																																											
9	10	11	12	13	14	15																																																																																											
16	17	18	19	20	21	22																																																																																											
23	24	25	26	27	28	29																																																																																											
30	31																																																																																																
S	M	T	W	T	F	S																																																																																											
						1 2 3																																																																																											
4	5	6	7	8	9	10																																																																																											
11	12	13	14	15	16	17																																																																																											
18	19	20	21	22	23	24																																																																																											
25	26	27	28	29	30	31																																																																																											

SEPTEMBER 2020

ABBREVIATIONS USED
IN THIS PUBLICATION

Plainview-Old Bethpage John F. Kennedy HS
Howard B. Mattlin Middle School
Plainview-Old Bethpage Middle School
Old Bethpage Elementary School

HS
MMS
POBMS
OB

Judy Jacobs-Parkway Elementary School
Pasadena Elementary School
Stratford Road Elementary School
Religious Holiday

JJP
PAS
SR
(R)

October 2020

"Life isn't about waiting for the storm to pass. It's about learning how to dance in the rain."
 -Vivian Greene



SUNDAY	MONDAY	TUESDAY	WEDNESDAY	THURSDAY	FRIDAY	SATURDAY
SEPTEMBER 2020	NOVEMBER 2020			1 DAY 1	2 DAY 2 (R)	3 (R)
S M T W T F S 1 2 3 4 5 6 7 8 9 10 11 12 13 14 15 16 17 18 19 20 21 22 23 24 25 26 27 28 29 30	S M T W T F S 1 2 3 4 5 6 7 8 9 10 11 12 13 14 15 16 17 18 19 20 21 22 23 24 25 26 27 28 29 30			ELEM. PTA Curriculum, 9:45am @ BOE Health/Safety Committee, 4pm SEPTA, 7:30pm @ POBMS		SAT @ POBJKHS

4 (R)	5 DAY 3 (R) HS PTA Curriculum, 1:45pm @ BOE Board of Ed. Mtg., 7:45pm	6 DAY 4 (R) BOE/PTA Council, Meet the Legislative Candidates Night @ POBMS HS DECA Installation, 7pm	7 DAY 5 (R) Nutrition Committee, 9:30am @ JJP MS PTA Curriculum, 10am @ BOE POB K Literacy & Math Night, 7pm @ PAS HS Safe Teen Driving Program, 7pm	8 DAY 6 (R) HS Parent/Teacher Conf. Afternoon & Evening, L-Z	9 DAY 1 (R) HS Deadline to drop a class or to level change (Gr. 10-12)	10 (R)	
11 (R)	12 (R) SCHOOL CLOSED	13 DAY 2 PTA Pres/Supt. Mtg., 9:30am POB Athletic Booster Club Mtg., 7:30pm @ HS OB/JJP/PAS PTA, 7:30pm	14 DAY 3 Gr. 5-12 Progress Reports Posted PSAT @ POBJFKHS MMS Picture Day, Gr. 5 & 6 HS Parent/Teacher Conf. Afternoon & Evening, A-K	15 DAY 4 MMS Picture Day, Gr. 7 & 8 HS Gr. 12 Cap & Gown Orders, 9am HS WL Honor Society Induction, 3pm SR PTA, 7:30pm MMS PTA, 7:30pm	16 DAY 5 JJP Fall Festival MMS PRIDE PEP Rally	17 (R)	
18 (R)	19 DAY 6 (R) HS Picture Day Make-Up HS Deadline to drop a class or to level change (Gr. 9) Board of Ed. Mtg., 7:45pm	20 DAY 1 (R) HS Parent/Teacher Conf. Make-Up Date HS Gr. 10 Guidance Info Night, 7pm	21 DAY 2 (R) POB Unity Day OB Picture Retake MMS/POBMS Parent/Teacher Conf. Afternoon & Evening, L-Z	22 DAY 3 (R) HS PTA, 7:30pm	23 DAY 4 (R) OB/SR Fall Festival HS PEP Rally POBMS PEP Rally MMS PRIDE Day	24 (R) Homecoming Parade Homecoming Game, 3pm @ HS ACT-Away	
POB Jones Beach Breast Cancer Walk		NEWSDAY MARCHING BAND FESTIVAL				HOMECOMING WEEK / SPIRIT WEEK	
25 (R)	26 DAY 5 (R) PAS Fall Picture Day Arts-In-Ed. Mtg., 9:30am PTA Council, 7:30pm @ MMS HS YEARBOOK PORTRAIT MAKE-UP	27 DAY 6 JJP/PAS Fall Picture Day/Gr. 4 Panoramic POBMS PTA, 7:30pm	28 DAY 1 MMS/POBMS Parent/Teacher Conf. Afternoon & Evening, A-K MMS/POBMS Winter 1 Sports Informational Mtg., 3pm	29 DAY 2 (R) SR Picture Day Title IX Meeting, 1:30pm @ HS POB Family Night	30 DAY 3 Coaches vs. Cancer Game Health Advisory Committee, 12pm @ BOE MMS Talent Show, 7pm	31	
COACHES VS. CANCER WEEK							

Plainview-Old Bethpage John F. Kennedy HS
Howard B. Mattlin Middle School
Plainview-Old Bethpage Middle School
Old Bethpage Elementary School

HS
MMS
POBMS
OB

Judy Jacobs-Parkway Elementary School
Pasadena Elementary School
Stratford Road Elementary School
Religious Holiday

JJP
PAS
SR
(R)

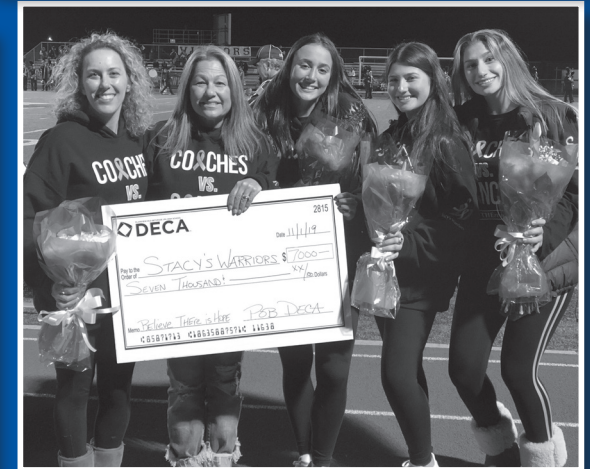
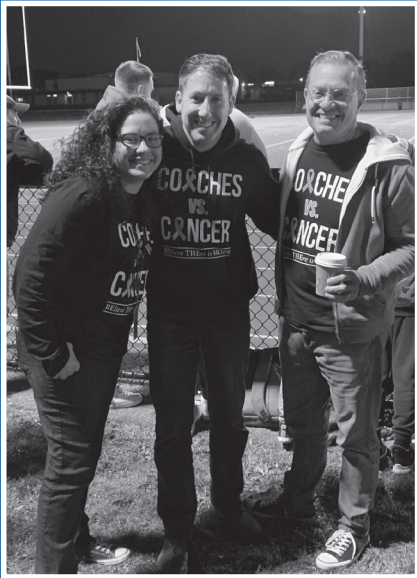
OCTOBER 2020

ABBREVIATIONS USED
IN THIS PUBLICATION

November 2020

*"If you can find a path with no obstacles,
it probably doesn't lead anywhere."*

—Frank A. Clark



SUNDAY	MONDAY	TUESDAY	WEDNESDAY	THURSDAY	FRIDAY	SATURDAY
1 (R)	2 DAY 4 (R)	3	4 DAY 5	5 DAY 6	6 DAY 1	7
	Board of Ed. Mtg., 7:45pm	<div style="border: 1px solid black; padding: 5px; text-align: center;">SUPERINTENDENT'S CONFERENCE DAY</div> <div style="border: 1px solid black; padding: 5px; text-align: center;">ELECTION DAY</div> <p style="text-align: center;">SCHOOL CLOSED</p>	<p>MMS/POBMS Parent/Teacher Conf. Make-Up Date Nutrition Committee, 9:30am @ PAS Athletic Council Mtg., 9:30am @ HS HS Gr. 11 Guidance Info Night, 7pm</p>	<p>PTA Council Event Security/Trans. Committee, 9:30am</p> <p style="text-align: center;">OB BOOK FAIR</p>	<p>HS Talent Show, 7pm</p>	SAT-Away

8	9 DAY 2 Gr. 5-12 Marking Period Ends MS Winter 1 Sports Begin HS Kickball Tournament, 2:30pm	10 DAY 3 Gr. 5-12 Marking Period Begins PTA Pres/Supt. Mtg., 9:30am Audit Committee Mtg., 7pm @ BOE	11 SCHOOL CLOSED	12 DAY 4 ELEM. PTA Curriculum, 9:45am @ SR Health/Safety Committee, 4pm MMS/POBMS PTA, 7:30pm	13 DAY 5 SR Gr. 4 Night Out MMS Career Fair	14 (R)																																																																																				
15	16 DAY 6 JV/V Winter Sports begin Arts-In-Ed. Mtg., 9:30am Board of Ed. Mtg., 7:45pm	17 DAY 1 Gr. 5-12 Report Cards Posted JJP/OB/PAS PTA, 9:30am POB Engineering Awareness Night @ HS, 6pm POB Athletic Booster Club Mtg., 7:30pm @ HS	18 DAY 2 MS PTA Curriculum, 10am @ BOE SEPTA Night Out POBMS PICTURE DAY	19 DAY 3 HS SADD Blood Drive SR PTA, 9:30am HS Fall Drama, 4:30pm JJP BOOK FAIR	20 DAY 4 MMS/POBMS Financial Literacy Day HS Fall Drama, 7:30pm	21 HS Fall Drama, 7:30pm																																																																																				
22	23 DAY 5 HS PTA Curriculum, 1:45pm @ BOE HS PTA, 7:30pm	24 DAY 6 V/JV Fall Sports Awards Ceremony, 7pm @ HS PTA Council, 7:30pm @ JJP	25 DAY 1 POBMS STREAM Day	26 SCHOOL CLOSED	27 SCHOOL CLOSED	28																																																																																				
29 (R)	30 DAY 2 PAS Picture Retake/Staff Photos Board of Ed. Mtg., 7:45pm				<p>OCTOBER 2020</p> <table border="1"> <tr><td>S</td><td>M</td><td>T</td><td>W</td><td>T</td><td>F</td><td>S</td></tr> <tr><td></td><td></td><td></td><td></td><td>1</td><td>2</td><td>3</td></tr> <tr><td>4</td><td>5</td><td>6</td><td>7</td><td>8</td><td>9</td><td>10</td></tr> <tr><td>11</td><td>12</td><td>13</td><td>14</td><td>15</td><td>16</td><td>17</td></tr> <tr><td>18</td><td>19</td><td>20</td><td>21</td><td>22</td><td>23</td><td>24</td></tr> <tr><td>25</td><td>26</td><td>27</td><td>28</td><td>29</td><td>30</td><td>31</td></tr> </table>	S	M	T	W	T	F	S					1	2	3	4	5	6	7	8	9	10	11	12	13	14	15	16	17	18	19	20	21	22	23	24	25	26	27	28	29	30	31	<p>DECEMBER 2020</p> <table border="1"> <tr><td>S</td><td>M</td><td>T</td><td>W</td><td>T</td><td>F</td><td>S</td></tr> <tr><td></td><td></td><td>1</td><td>2</td><td>3</td><td>4</td><td>5</td></tr> <tr><td>6</td><td>7</td><td>8</td><td>9</td><td>10</td><td>11</td><td>12</td></tr> <tr><td>13</td><td>14</td><td>15</td><td>16</td><td>17</td><td>18</td><td>19</td></tr> <tr><td>20</td><td>21</td><td>22</td><td>23</td><td>24</td><td>25</td><td>26</td></tr> <tr><td>27</td><td>28</td><td>29</td><td>30</td><td>31</td><td></td><td></td></tr> </table>	S	M	T	W	T	F	S			1	2	3	4	5	6	7	8	9	10	11	12	13	14	15	16	17	18	19	20	21	22	23	24	25	26	27	28	29	30	31		
S	M	T	W	T	F	S																																																																																				
				1	2	3																																																																																				
4	5	6	7	8	9	10																																																																																				
11	12	13	14	15	16	17																																																																																				
18	19	20	21	22	23	24																																																																																				
25	26	27	28	29	30	31																																																																																				
S	M	T	W	T	F	S																																																																																				
		1	2	3	4	5																																																																																				
6	7	8	9	10	11	12																																																																																				
13	14	15	16	17	18	19																																																																																				
20	21	22	23	24	25	26																																																																																				
27	28	29	30	31																																																																																						

NOVEMBER 2020

ABBREVIATIONS USED
IN THIS PUBLICATION

Plainview-Old Bethpage John F. Kennedy HS
Howard B. Mattlin Middle School
Plainview-Old Bethpage Middle School
Old Bethpage Elementary School

HS
MMS
POBMS
OB

Judy Jacobs-Parkway Elementary School
Pasadena Elementary School
Stratford Road Elementary School
Religious Holiday

JJP
PAS
SR
(R)

December 2020

"Without great solitude, no serious work is possible." –Pablo Picasso



SUNDAY	MONDAY	TUESDAY	WEDNESDAY	THURSDAY	FRIDAY	SATURDAY
		1 DAY 3 PTA Pres./Supt. Mtg., 9:30am	2 DAY 4 Gr. K-4 End of Marking Period ELEM. Gr. K-4 Parent/Teacher Conf. Morning Nutrition & Health Advisory Committee, 9:30am @ BOE MMS HOLIDAY BOUTIQUE POP-UP (LUNCH PERIODS) PAS BOOK FAIR SR BOOK FAIR JJP HOLIDAY BOUTIQUE SEPTA, 7:30pm @ POBMS	3 DAY 5 Gr. K-4 Beginning of Marking Period ELEM. Gr. K-4 Parent/Teacher Conf. 1/2 Day PM & Evening OB Staff Appreciation Security/Trans. Committee, 9:30am MMS Winter Concert, 7pm	4 DAY 6 JJP Picture Retake HS Broadway Cabaret Night, 7pm NYSSMA ALL-STATE FESTIVAL - ROCHESTER	5 HS METMUNC Conference HS DECA Regionals SAT-Away

6 (R)	7 DAY 1	8 DAY 2 (R)	9 DAY 3	10 DAY 4 (R)	11 DAY 5 (R)	12 (R)
NYSSMA ALL-STATE FESTIVAL – ROCHESTER	ELEM. Gr. K-4 Parent/Teacher Conf. Morning	JJP Winter Concert, 10:30am PAS HOLIDAY BOUTIQUE	Gr. K-4 Report Cards Posted ELEM. Gr. K-4 Parent/Teacher Conf. Morning MMS Picture Retake OB Winter Concert, 10:30am MAPOB Mtg., 5pm HS Orchestra and Jazz Concert, 7pm	PAS Winter Concert, 10:30am Health/Safety Committee, 4pm MMS Winter Concert, 7pm POBMS Winter Concert, 7pm	SR Winter Concert, 10:30am HS POB Idol, 7pm	ACT – Away
SR HOLIDAY BOUTIQUE			OB HOLIDAY BOUTIQUE			
13 (R)	14 DAY 6 (R) Gr. 5-12 Progress Reports Posted	15 DAY 1 (R)	16 DAY 2 (R)	17 DAY 3 (R)	18 DAY 4 (R)	19
	ELEM. Gr. K-4 Parent/Teacher Conf. Morning Board of Ed. Mtg., 7:45pm	POBMS Winter Concert, 7pm MMS Winter Concert, 7pm	SR Picture Retake & Gr. 4 Class Picture HS Community Service Club Senior Citizen Holiday Tea, 3pm HS PTA, 7:30pm	Title IX Meeting, 1:30pm @ HS POBMS PTA, 7:30pm POB Athletic Booster Club Mtg., 7:30pm @ HS		
20	21 DAY 5 PTA Council, 7:30pm @ OB	22 DAY 6 HS Winter Choir Concert, 7pm	23 DAY 1 HS Caroling Day Athletic Council Mtg., 9:30am @ HS	24 SCHOOL CLOSED	25 (R) SCHOOL CLOSED	26
27	28 SCHOOL CLOSED	29 SCHOOL CLOSED	30 SCHOOL CLOSED	31 SCHOOL CLOSED	NOVEMBER 2020	JANUARY 2021
					S M T W T F S 1 2 3 4 5 6 7 8 9 10 11 12 13 14 15 16 17 18 19 20 21 22 23 24 25 26 27 28 29 30	S M T W T F S 1 2 3 4 5 6 7 8 9 10 11 12 13 14 15 16 17 18 19 20 21 22 23 24 25 26 27 28 29 30 31

DECEMBER 2020

ABBREVIATIONS USED
IN THIS PUBLICATION

Plainview-Old Bethpage John F. Kennedy HS
Howard B. Mattlin Middle School
Plainview-Old Bethpage Middle School
Old Bethpage Elementary School

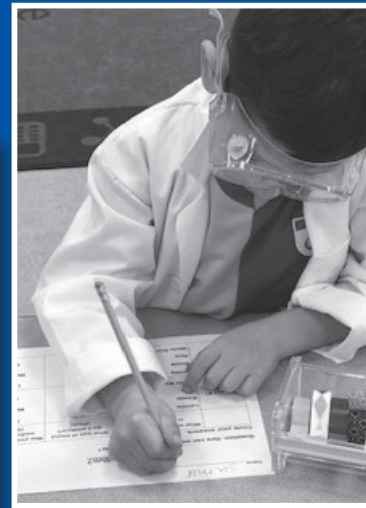
HS
MMS
POBMS
OB

Judy Jacobs-Parkway Elementary School
Pasadena Elementary School
Stratford Road Elementary School
Religious Holiday

JJP
PAS
SR
(R)

January 2021

"You are braver than you believe, stronger than you seem, smarter than you think, and loved more than you'll ever know." –A.A. Milne



SUNDAY							MONDAY							TUESDAY							WEDNESDAY							THURSDAY							FRIDAY							SATURDAY						
DECEMBER 2020							FEBRUARY 2021																					1							2													
S	M	T	W	T	F	S	S	M	T	W	T	F	S																													SCHOOL CLOSED						
		1	2	3	4	5	1	2	3	4	5	6																																				
6	7	8	9	10	11	12	7	8	9	10	11	12	13																																			
13	14	15	16	17	18	19	14	15	16	17	18	19	20																																			
20	21	22	23	24	25	26	21	22	23	24	25	26	27																																			
27	28	29	30	31	28																																											

3	4 DAY 2 PAS PARP Kickoff Arts-In-Ed Mtg., 9:30am	5 DAY 3 PTA Pres/Supt. Mtg., 9:30am HS Incoming Gr. 9 Parent Orientation, 7pm	6 DAY 4 (R) Nutrition Committee, 9:30am @ HS Michael Secko Memorial Basketball Tournament, 2:30pm MMS/POBMS Winter 2 Sport Informational Meeting, 3pm SEPTA, 7:30pm @POBMS	7 DAY 5 (R) SR PTA, 9:30am HS Parents Night Out	8 DAY 6 HS Night of A Cappella, 6:30pm & 8:30pm	9
ALL-COUNTY MUSIC FESTIVAL						
10	11 DAY 1 HS PTA Curriculum, 1:45pm @ BOE Board of Ed. Mtg., 7:45pm	12 DAY 2 POBMS Picture Retake HS Parent Mtg., for NYS DECA Competition, 6-6:30pm SAT & ACT: All You Need to Know, 7pm @ HS	13 DAY 3 MS PTA Curriculum, 10am @ BOE JJP/OB PTA, 7:30pm POB Athletic Booster Club Mtg., 7:30pm @ HS	14 DAY 4 (R) Security/Trans. Committee, 9:30am ELEM. PTA Curriculum, 9:45am @ OB Adult Ed. Open Reg. 6:30-8:30pm @ POBMS MMS/POBMS PTA, 7:30pm	15 DAY 5 PAS Gr. 1 Night Out	16
ALL-COUNTY MUSIC FESTIVAL						
17	18 SCHOOL CLOSED	19 DAY 6 MS Winter 2 Sports Begin PAS PTA, 7:30pm	20 DAY 1 PTA Pres/Principal Dinner	21 DAY 2 Title IX Meeting, 1:30pm @ HS Health/Safety Committee, 4pm HS PTA, 7:30pm	22 DAY 3 OB Talent Show	23
ALL-COUNTY MUSIC FESTIVAL						
24	25 DAY 4 Gr. 5-12 Marking Period Ends	26 DAY 5 Gr. 5-12 Marking Period Begins	27 DAY 6 (R)	28 DAY 1 (R)	29 DAY 2	30
31	Board of Ed. Mtg., 7pm (Student Recognition Ceremony)	MMS/POBMS Incoming Gr. 8 Parent Transition Mtg., 7pm	HS REGENTS AND MID-YEAR EXAMS			HS Senior Vocal Recital, 12pm
PAS PARP WEEK						

JANUARY 2021

ABBREVIATIONS USED
IN THIS PUBLICATION

Plainview-Old Bethpage John F. Kennedy HS
Howard B. Mattlin Middle School
Plainview-Old Bethpage Middle School
Old Bethpage Elementary School

HS
MMS
POBMS
OB

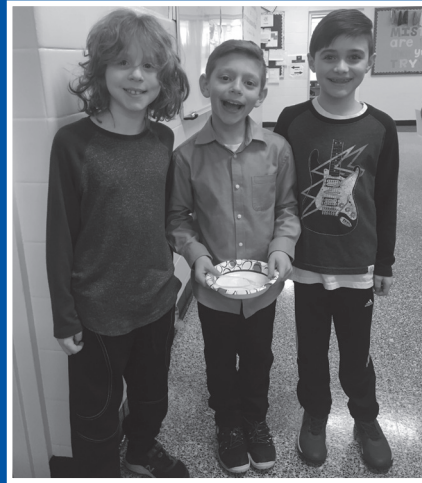
Judy Jacobs-Parkway Elementary School
Pasadena Elementary School
Stratford Road Elementary School
Religious Holiday


JJP
PAS
SR
(R)


February 2021

*"If you don't like something, change it.
If you can't change it, change your attitude."*

—Maya Angelou



SUNDAY	MONDAY	TUESDAY	WEDNESDAY	THURSDAY	FRIDAY	SATURDAY
	1 DAY 3 Gr. 5-12 Report Cards Posted POB Parent Academy @ MMS	2 DAY 4 PTA Pres/Supt. Mtg., 9:30am SEPTA, 7:30pm @ POBMS	3 DAY 5 Nutrition Committee, 9:30am @ POBMS Spec. Ed. Parent Transition Mtg., @ POBMS Library; Gr. 4-5, 7pm; Gr. 8-9, 7:45pm	4 DAY 6 POBMS Musical, 4:30pm HS COLLEGE TOUR	5 DAY 1 JJP Kids Heart Challenge Week Kickoff POBMS Musical, 7:30pm	6 POBMS Musical, 7:30pm ACT Away
JJP PARP WEEK						
SR KIDS HEART CHALLENGE WEEK						
POBMS LITERACY WEEK						

7	8 DAY 2 Arts-In-Ed Mtg., 9:30am Board of Ed. Mtg., 7:45pm	9 DAY 3 MMS/POBMS PTA, 7:30pm POB Athletic Booster Club Mtg., 7:30pm @ HS	10 DAY 4 Athletic Council Mtg., 9:30am @ HS HS Band Concert, 7pm	11 DAY 5 HS Band Concert, 7pm (Snow Date)	12 (R) SCHOOL CLOSED	13																																																																																																																
OB PARP WEEK																																																																																																																						
14	15 SCHOOL CLOSED	16 (R) SCHOOL CLOSED	17 (R) SCHOOL CLOSED	18 SCHOOL CLOSED	19 SCHOOL CLOSED	20																																																																																																																
21	22 DAY 6 Adult Ed. Spring Classes Begin Board of Ed. Mtg., 7pm (Budget Meeting #1)	23 DAY 1 MMS/POBMS Spring Sport Informational Meetings, 3pm V/JV Winter Sports Awards Ceremony, 7pm @ HS	24 DAY 2 MAPOB Mtg., 7pm HS PTA, 7:30pm	25 DAY 3 (R) ELEM. PTA Curriculum, 9:45am @ JJP Audit Committee Mtg., 7pm @ BOE	26 DAY 4 (R) SEPTA Family Night	27																																																																																																																
SR PARP WEEK					HS LISFA FESTIVAL																																																																																																																	
28 HS LISFA Festival				<table border="1"> <thead> <tr> <th colspan="7">JANUARY 2021</th> <th colspan="7">MARCH 2021</th> </tr> <tr> <th>S</th><th>M</th><th>T</th><th>W</th><th>T</th><th>F</th><th>S</th> <th>S</th><th>M</th><th>T</th><th>W</th><th>T</th><th>F</th><th>S</th> </tr> </thead> <tbody> <tr> <td></td><td></td><td></td><td></td><td></td><td>1</td><td>2</td> <td></td><td></td><td>1</td><td>2</td><td>3</td><td>4</td><td>5</td><td>6</td> </tr> <tr> <td>3</td><td>4</td><td>5</td><td>6</td><td>7</td><td>8</td><td>9</td> <td>7</td><td>8</td><td>9</td><td>10</td><td>11</td><td>12</td><td>13</td> </tr> <tr> <td>10</td><td>11</td><td>12</td><td>13</td><td>14</td><td>15</td><td>16</td> <td>14</td><td>15</td><td>16</td><td>17</td><td>18</td><td>19</td><td>20</td> </tr> <tr> <td>17</td><td>18</td><td>19</td><td>20</td><td>21</td><td>22</td><td>23</td> <td>21</td><td>22</td><td>23</td><td>24</td><td>25</td><td>26</td><td>27</td> </tr> <tr> <td>24</td><td>25</td><td>26</td><td>27</td><td>28</td><td>29</td><td>30</td> <td>28</td><td>29</td><td>30</td><td>31</td><td></td><td></td><td></td> </tr> <tr> <td>31</td><td></td><td></td><td></td><td></td><td></td><td></td> <td></td><td></td><td></td><td></td><td></td><td></td><td></td> </tr> </tbody> </table>		JANUARY 2021							MARCH 2021							S	M	T	W	T	F	S	S	M	T	W	T	F	S						1	2			1	2	3	4	5	6	3	4	5	6	7	8	9	7	8	9	10	11	12	13	10	11	12	13	14	15	16	14	15	16	17	18	19	20	17	18	19	20	21	22	23	21	22	23	24	25	26	27	24	25	26	27	28	29	30	28	29	30	31				31													
JANUARY 2021							MARCH 2021																																																																																																															
S	M	T	W	T	F	S	S	M	T	W	T	F	S																																																																																																									
					1	2			1	2	3	4	5	6																																																																																																								
3	4	5	6	7	8	9	7	8	9	10	11	12	13																																																																																																									
10	11	12	13	14	15	16	14	15	16	17	18	19	20																																																																																																									
17	18	19	20	21	22	23	21	22	23	24	25	26	27																																																																																																									
24	25	26	27	28	29	30	28	29	30	31																																																																																																												
31																																																																																																																						

FEBRUARY 2021

ABBREVIATIONS USED
IN THIS PUBLICATION

Plainview-Old Bethpage John F. Kennedy HS
Howard B. Mattlin Middle School
Plainview-Old Bethpage Middle School
Old Bethpage Elementary School

HS
MMS
POBMS
OB

Judy Jacobs-Parkway Elementary School
Pasadena Elementary School
Stratford Road Elementary School
Religious Holiday


JJP
PAS
SR
(R)

March 2021

"No matter what happens in life, be good to people. Being good to people is a wonderful legacy to leave behind."

–Taylor Swift



SUNDAY	MONDAY	TUESDAY	WEDNESDAY	THURSDAY	FRIDAY	SATURDAY
	<p>1 DAY 5</p> <p>HS PTA Curriculum, 1:45pm @ BOE Board of Ed. Mtg., 7pm (Budget Meeting #2)</p>	<p>2 DAY 6</p> <p>PTA Pres/Supt. Mtg., 9:30am CPSE to CSE Parent Transition Mtg., 6:30pm @ POBMS PTA Council, 7:30pm @ POBMS</p>	<p>3 DAY 1</p> <p>Nutrition Committee, 9:30am @ SR MMS/POBMS Incoming Gr. 6 Parent Transition Mtg., 6:30pm; Gr. 7, 7:45pm</p>	<p>4 DAY 2</p> <p>POB Gr. 3 Exchange Concert POB Family Sports Night @ POBMS POB Family Night</p>	<p>5 DAY 3</p> <p>Gr. 5-12 Progress Reports Posted</p> <p>PAS Gr. 2 Night Out OB Sweetheart Dance</p>	<p>6</p>
<p>NYS DECA COMPETITION</p>						
<p>NYSSMA PIANO FESTIVAL – NASSAU COMMUNITY COLLEGE</p>						

7	8 DAY 4	9 DAY 5	10 DAY 6 (R)	11 DAY 1 (R)	12 DAY 2	13																																																																																					
	POB ENL Celebration of Diversity, 7pm @ POBMS	PAS PTA, 9:30am HS Gr. 11 College Rep Talk, 7pm JJP/OB PTA, 7:30pm	SR PTA, 9:30am MS PTA Curriculum, 10am @ BOE PTA Founders Day, 6:15pm	HS Tri-M Honor Society Induction Ceremony, 3pm MAPOB Instrument Zoo, 7pm	HS SADD Spring Blood Drive	SAT @ POBJFKHS																																																																																					
14	15 DAY 3	16 DAY 4	17 DAY 5	18 DAY 6	19 DAY 1	20																																																																																					
	V/JV B/G Lacrosse, B/GTrack, Baseball, Softball Begin ELEM. Gr. K-4 Parent/Teacher Conf. Morning POB St. Baldrick's @ MMS Board of Ed. Mtg., 7pm (Budget Meeting #3)	HS Gr. 11 College Essay Night, 7pm POB Athletic Booster Club Mtg., 7:30pm @ HS SEPTA, 7:30pm @ POBMS	ELEM. Gr. K-4 Parent/Teacher Conf. Morning MMS/POBMS PTA, 7:30pm JJP BOOK FAIR HS BATTLE WEEK	ELEM. Gr. K-4 Parent/Teacher Conf. Evening JJP/OB/PAS/SR Staff Appreciation Security/Trans. Committee, 9:30am MMS Musical, 4:30pm PAS BOOK FAIR SR BOOK FAIR OB BOOK FAIR	Gr. K-4 End of Marking Period HS Battle of the Classes, 2:30pm MMS Musical, 7pm	Leadership Summit HS Community Service Club Senior Citizen Prom MMS Musical, 7:30pm																																																																																					
21	22 DAY 2	23 DAY 3	24 DAY 4	25 DAY 5	26 DAY 6	27 (R)																																																																																					
	Gr. K-4 Beginning of Marking Period V/JV B/G Golf, B Tennis, G Badminton Begin ELEM. Gr. K-4 Parent/Teacher Conf.-Morning Arts-In-Ed Mtg., 9:30am HS College Fair, 7pm	PAS Spring Pictures HS PTA, 7:30pm	ELEM. Gr. K-4 Parent/Teacher Conf. Morning Board of Ed. Mtg., 7pm (Budget Meeting #4)	HS Moot Court Tournament Title IX Meeting, 1:30pm @ HS Health/Safety Committee, 4pm POB STEAM Night	Gr. K-4 Report Cards Posted Health Advisory Committee, 12pm PAS Gr. 3 Hoedown, 7pm																																																																																						
28 (R)	29 (R)	30 (R)	31 (R)			<p>FEBRUARY 2021</p> <table border="1"> <tr><td>S</td><td>M</td><td>T</td><td>W</td><td>T</td><td>F</td><td>S</td></tr> <tr><td></td><td>1</td><td>2</td><td>3</td><td>4</td><td>5</td><td>6</td></tr> <tr><td>7</td><td>8</td><td>9</td><td>10</td><td>11</td><td>12</td><td>13</td></tr> <tr><td>14</td><td>15</td><td>16</td><td>17</td><td>18</td><td>19</td><td>20</td></tr> <tr><td>21</td><td>22</td><td>23</td><td>24</td><td>25</td><td>26</td><td>27</td></tr> <tr><td>28</td><td></td><td></td><td></td><td></td><td></td><td></td></tr> </table> <p>APRIL 2021</p> <table border="1"> <tr><td>S</td><td>M</td><td>T</td><td>W</td><td>T</td><td>F</td><td>S</td></tr> <tr><td></td><td></td><td></td><td></td><td></td><td>1</td><td>2</td><td>3</td></tr> <tr><td>4</td><td>5</td><td>6</td><td>7</td><td>8</td><td>9</td><td>10</td></tr> <tr><td>11</td><td>12</td><td>13</td><td>14</td><td>15</td><td>16</td><td>17</td></tr> <tr><td>18</td><td>19</td><td>20</td><td>21</td><td>22</td><td>23</td><td>24</td></tr> <tr><td>25</td><td>26</td><td>27</td><td>28</td><td>29</td><td>30</td><td></td></tr> </table>	S	M	T	W	T	F	S		1	2	3	4	5	6	7	8	9	10	11	12	13	14	15	16	17	18	19	20	21	22	23	24	25	26	27	28							S	M	T	W	T	F	S						1	2	3	4	5	6	7	8	9	10	11	12	13	14	15	16	17	18	19	20	21	22	23	24	25	26	27	28	29	30	
S	M	T	W	T	F	S																																																																																					
	1	2	3	4	5	6																																																																																					
7	8	9	10	11	12	13																																																																																					
14	15	16	17	18	19	20																																																																																					
21	22	23	24	25	26	27																																																																																					
28																																																																																											
S	M	T	W	T	F	S																																																																																					
					1	2	3																																																																																				
4	5	6	7	8	9	10																																																																																					
11	12	13	14	15	16	17																																																																																					
18	19	20	21	22	23	24																																																																																					
25	26	27	28	29	30																																																																																						
	SCHOOL CLOSED	SCHOOL CLOSED	SCHOOL CLOSED																																																																																								

MARCH 2021

ABBREVIATIONS USED
IN THIS PUBLICATION

Plainview-Old Bethpage John F. Kennedy HS
Howard B. Mattlin Middle School
Plainview-Old Bethpage Middle School
Old Bethpage Elementary School

HS
MMS
POBMS
OB

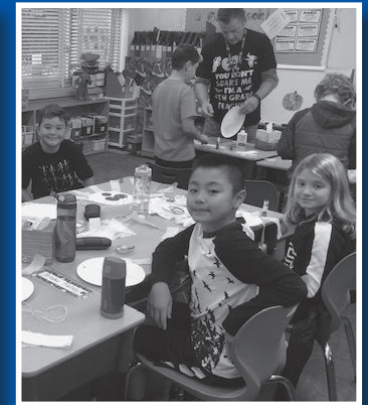
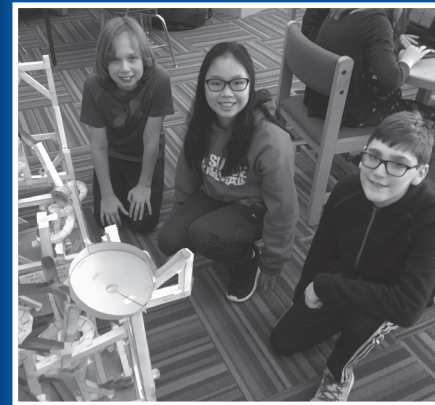
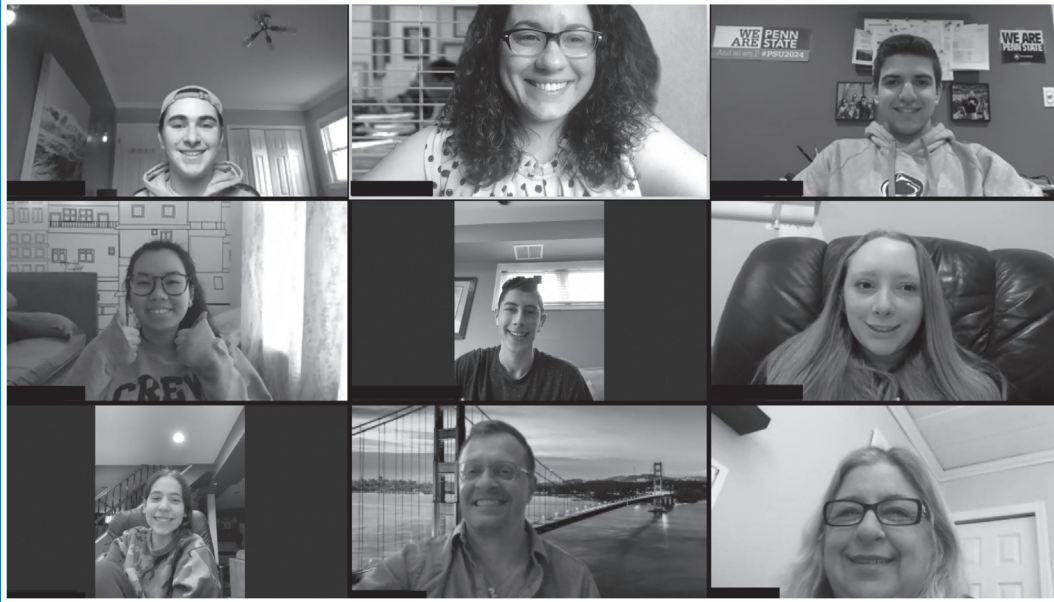
Judy Jacobs-Parkway Elementary School
Pasadena Elementary School
Stratford Road Elementary School
Religious Holiday

JJP
PAS
SR
(R)

April 2021

"You're going to fall down, but the world doesn't care how many times you fall down, as long as it's one fewer than the numbers of times you get back up."

—Andy Sorkin



SUNDAY	MONDAY	TUESDAY	WEDNESDAY	THURSDAY	FRIDAY	SATURDAY
MARCH 2021	MAY 2021					
S M T W T F S	S M T W T F S					
1 2 3 4 5 6	1					
7 8 9 10 11 12 13	2 3 4 5 6 7 8					
14 15 16 17 18 19 20	9 10 11 12 13 14 15					
21 22 23 24 25 26 27	16 17 18 19 20 21 22					
28 29 30 31	23 24 25 26 27 28 29					
	30 31			1 (R)	2 (R)	3 (R)
				SCHOOL CLOSED	SCHOOL CLOSED	

4	(R)	5	SCHOOL CLOSED	6	Inclement Weather Day #1 SCHOOL CLOSED	7	DAY 1 MS Spring Sports Begin Athletic Council Mtg., 9:30am @ HS POB Athletic Booster Club Mtg., 7:30pm @ HS	8	DAY 2 HS Pre-Prom Mtg., 7pm SEPTA, 7:30pm @ POBMS	9	DAY 3 POBMS Career Fair JJP Family Night PAS Kindergarten Night Out	10		
11		12	DAY 4 HS PTA Curriculum, 1:45pm @ BOE HS Reading Night, 7pm	(R)	13	DAY 5 PTA Pres/Supt. Mtg., 9:30am HS Art Honor Society Induction & Auction, 3pm SR Birthday Wishes, 7pm MMS PTA, 7:30pm	14	DAY 6 Gr. 5-12 Marking Period Ends Nutrition Committee, 9:30am @ MMS Board of Ed. Mtg., 7:45pm	15	DAY 1 Gr. 5-12 Marking Period Begins ELEM. PTA Curriculum, 9:45am @ PAS HS Musical, 4:30pm	16	DAY 2 HS Musical, 7:30pm	17	HS Musical, 2pm & 7:30pm ACT Away
18		19	DAY 3 Arts-In-Ed Mtg., 9:30am JJP/OB/PAS PTA, 7:30pm	20	DAY 4 BOCES BUDGET VOTE HS Orchestra Concert, 7pm NYSSMA SOLO FESTIVAL, WESTBURY	21	DAY 5 (R) Gr. 5-12 Report Cards Posted MS PTA Curriculum, 10am @ BOE PTA Council, 7:30pm @ HS	22	DAY 6 HS Pre-Prom Mtg., 7pm GR. 3-8 NYS ELA EXAMS	23	DAY 1 GR. 3-8 NYS ELA EXAM MAKE-UPS	24	HS DECA ICDC	
25		26	DAY 2 Board of Ed. Mtg., 7pm (Budget Adoption) GR. 3-8 NYS ELA EXAM MAKE-UPS	27	DAY 3 MMS/POBMS Incoming Gr. 5 Parent Transition Night, 7pm HS PTA, 7:30pm HS DECA ICDC	28	DAY 4 SR PTA, 9:30am MAPOB Mtg., 5pm	29	DAY 5 (R) MMS Spring Concert, 7pm POBMS PTA, 7:30pm JJP / OB / PAS / SR PLANT SALES	30	DAY 6 (R) OB Shop & Mingle PAS Gr. 4 Hoedown, 7pm			

APRIL 2021

ABBREVIATIONS USED
IN THIS PUBLICATION

Plainview-Old Bethpage John F. Kennedy HS
Howard B. Mattlin Middle School
Plainview-Old Bethpage Middle School
Old Bethpage Elementary School

HS
MMS
POBMS
OB

Judy Jacobs-Parkway Elementary School
Pasadena Elementary School
Stratford Road Elementary School
Religious Holiday

JJP
PAS
SR
(R)

May 2021

"Patriotism is not short, frenzied outbursts of emotion, but the tranquil and steady dedication of a lifetime."

—Adlai Stevenson II



SUNDAY	MONDAY	TUESDAY	WEDNESDAY	THURSDAY	FRIDAY	SATURDAY
<p>APRIL 2021</p> <p>S M T W T F S</p> <p>1 2 3</p> <p>4 5 6 7 8 9 10</p> <p>11 12 13 14 15 16 17</p> <p>18 19 20 21 22 23 24</p> <p>25 26 27 28 29 30</p>	<p>JUNE 2021</p> <p>S M T W T F S</p> <p>1 2 3 4 5</p> <p>6 7 8 9 10 11 12</p> <p>13 14 15 16 17 18 19</p> <p>20 21 22 23 24 25 26</p> <p>27 28 29 30</p>					<p>1</p>

2	(R)	3 DAY 1 HS Staff Appreciation Breakfast Arts in Ed. Mtg., 9:30am MMS Spring Concert, 7pm POBMS Spring Concert, 7pm	4 DAY 2 MMS Staff Appreciation PTA Pres/Supt. Mtg., 9:30am	5 DAY 3 HS Night of Scenes, 7pm SEPTA, 7:30pm @POBMS GR. 3-8 NYS MATH EXAMS	6 DAY 4 Security/Trans. Committee, 9:30am MMS PTA, 7:30pm GR. 3-8 NYS MATH EXAMS	7 DAY 5 PAS Parents Night Out GR. 3-8 NYS MATH EXAM MAKE-UPS NYSSMA ALL-STATE	8 SAT Away FESTIVAL, SYOSSET
HS AP EXAMS							
9	(R)	10 DAY 6 JJP Incoming K Orientation, 10am Board of Ed. Mtg., 7pm (Budget Hearing) GR. 3-8 NYS MATH EXAM MAKE-UPS	11 DAY 1 VOTER REGISTRATION 4-8pm PAS PTA, 9:30am PTA BOE Candidates' Night, 7pm @ POBMS	12 DAY 2 (R) JJP/OB PTA, 9:30am MMS Spring Concert, 7pm POBMS Spring Concert, 7pm POB Athletic Booster Club Mtg., 7:30pm @ HS	13 (R) SUPERINTENDENT'S CONFERENCE DAY SCHOOL CLOSED	14 DAY 3 SR Field Day (Rain Date 5/18) HS Spring Night of A Cappella, 6:30pm & 8pm HS AP EXAMS	15 HS Junior Gala, 7pm
		HS AP EXAMS					
16		17 DAY 4 (R) HS Science Honor Society Induction, 3pm; Research Symposium, 4:30pm POB Childcare Orientation and Registration, 7pm @ SR	18 DAY 5 SCHOOL BUDGET VOTE 6am-9pm PAS Incoming K Orientation, 10am ELEM. Art Expo, 4-6:30pm @ POBMS Audit Committee Mtg., 7pm @ BOE PTA Council, 7:30pm @ MMS	19 DAY 6 Gr. 5-12 Progress Reports Posted Athletic Council Mtg., 9:30am @ HS MS PTA Curriculum, 10am @ BOE OB Incoming K Orientation, 10am MAPOB Mtg., 5pm HS Band Concert, 7pm PAS/SR Spring Concert, 7pm MMS BOOK FAIR	20 DAY 1 HS Student Government Elections SR Incoming K Orientation, 10am Title IX Meeting, 1:30pm @ BOE Room Health/Safety Committee, 4pm JJP/OB Spring Concert, 7pm POBMS PTA, 7:30pm NYSSMA MAJORS INSTRUMENTAL ONLY, MINEOLA NYSSMA ALL-STATE JAZZ AND VOCAL JAZZ, EAST MEADOW	21 DAY 2 SR Family Picnic (Rain Date 6/4) JJP Fitness Day (Rain Date 5/26) MMS Carnival for a Cure, 3:30-5pm Health Advisory Committee, 12pm @ BOE JJP/OB Parents Night Out	22 SEPTA/SNAP Track & Field Day, 12-2pm
23	(R)	24 DAY 3 (R) HS PTA Curriculum, 1:45pm @ BOE Board of Ed. Mtg., 7pm (Student Recognition Night) NYSSMA MAJORS, HOFSTRA	25 DAY 4 HS Night of Jazz, 7pm SR PTA, 7:30pm GR. 4 & 8 SCIENCE PERFORMANCE EXAMS NYSSMA MAJORS, HOFSTRA	26 DAY 5 HS PTA, 7:30pm	27 Inclement Weather Day #2 SCHOOL CLOSED	28 Inclement Weather Day #3 SCHOOL CLOSED	29
30		31 SCHOOL CLOSED					

MAY 2021

ABBREVIATIONS USED
IN THIS PUBLICATION

Plainview-Old Bethpage John F. Kennedy HS
Howard B. Mattlin Middle School
Plainview-Old Bethpage Middle School
Old Bethpage Elementary School

HS
MMS
POBMS
OB

Judy Jacobs-Parkway Elementary School
Pasadena Elementary School
Stratford Road Elementary School
Religious Holiday

JJP
PAS
SR
(R)

June 2021

"The unfortunate, yet truly exciting thing about your life, is that there is no core curriculum. The entire place is an elective."

—Jon Stewart



SUNDAY	MONDAY	TUESDAY	WEDNESDAY	THURSDAY	FRIDAY	SATURDAY
		1 DAY 6 PTA Pres/Supt. Mtg., 9:30am MAPOB Mtg., 5pm POB Gr. K-4 Literacy Night, 6:45pm @ SR HS Choir Concert, 7pm HS U.S. HISTORY & GOVERNMENT REGENTS	2 DAY 1 Nutrition Committee, 9:30am @ OB HS Orchestra Tea, 3pm POB Social Skills Celebration, 7pm @ SR POB Athletic Booster Club Mtg., 7:30pm @ HS	3 DAY 2 ^(R) MMS/POBMS Gr. 8 Visit to HS ELEM. PTA Curriculum, 9:45am @ BOE POBMS Art 9 Show, 5-6:30pm HS Underclassmen Award Ceremony, 7pm	4 DAY 3 JJP/OB Family Picnic (Rain date 6/11) PAS Field Day (Rain Date 6/11) OB Field Day (Rain Date 6/11) POBMS Personal Best Awards, 8am MMS Pride Awards, Per. 9	5 Relay for Life @ POBMS SAT @ POBJFKHS
GR. 4 & 8 SCIENCE PERFORMANCE EXAMS						

6	7 DAY 4 Arts-In-Ed Mtg., 9:30am MMS Art 9 Show, 5-6:30pm Board of Ed. Mtg., 7pm (Tenure Recognition Night) GR. 4 & 8 SCIENCE WRITTEN EXAM	8 DAY 5 HS Business Honor Society Induction, 3pm V/JV Spring Sports Awards Ceremony, 7pm @ HS GR. 4 & 8 SCIENCE WRITTEN EXAM MAKE-UPS	9 DAY 6 PTA Central Admin Lunch HS National Honor Society Induction, 7pm SEPTA, 7:30pm @ POBMS	10 DAY 1 HS Senior Award & Scholarship Ceremony, 7pm PAS PTA, 7:30pm	11 DAY 2 JJP Gr. 4 Carnival SR Circus HS Slgn & Dine, 2:30pm HS Choir Formal, 5:30pm	12 ACT @ POBJFKHS																																																																																																																	
13	14 DAY 3 HS Senior Walk MMS Sign & Dine Music Department Banquet, 7pm MMS/POBMS PTA, 7:30pm	15 DAY 4 PTA Pres/Supt. Mtg., 9:30am HS Senior Student Athlete and Wall of Fame Dinner, 6:30pm	16 DAY 5 Athletic Council Mtg., 9:30am @ HS SR PTA, 9:30am PTA Outgoing Presidents Dinner HS FINALS / REGENTS EXAMS	17 DAY 6 HS Thespian Honor Society Dinner, 5pm JJP/OB PTA, 7:30pm	18 DAY 1 POBMS Sign & Dine SR Gr. 4 Party JJP/OB Moving Up Ceremony, 10am	19																																																																																																																	
20	21 DAY 2 HS Graduation Rehearsal @ Tilles Center, 11am Board of Ed. Mtg., 7pm (Staff Retirement Recognition Night)	22 DAY 3 PAS Moving Up Ceremony, 10am HS PTA, 7:30pm HS FINALS / REGENTS EXAMS	23 DAY 4 PAS Gr.4 Breakfast SR Moving Up Ceremony, 10am MAPOB Mtg., 4pm PTA Council, 7:30pm @ POBMS	24 DAY 5 Gr. K-8 Regrouping Day EARLY DISMISSAL JJP/OB Gr. 4 Breakfast HS Senior Prom, 7pm-Midnight	25 DAY 6 Last Day of Classes, K-12 EARLY DISMISSAL Gr. 5-12 Marking Period Ends Gr. K-4 End of Marking Period SR Gr.4 Breakfast & Human Board Games OB Staff Appreciation MMS Moving Up Ceremony, 9am POBMS Moving Up Ceremony, 10am	26																																																																																																																	
27 HS Graduation @ Tilles Center, 1pm	28 Gr. 5-12 Report Cards Posted	29 Gr. K-4 Report Cards Posted	30	<table border="1"> <tr> <th colspan="7">MAY 2021</th> <th colspan="7">JULY 2021</th> </tr> <tr> <td>S</td><td>M</td><td>T</td><td>W</td><td>T</td><td>F</td><td>S</td> <td>S</td><td>M</td><td>T</td><td>W</td><td>T</td><td>F</td><td>S</td> </tr> <tr> <td></td><td></td><td></td><td></td><td></td><td></td><td>1</td> <td></td><td></td><td></td><td></td><td></td><td>1</td><td>2</td><td>3</td> </tr> <tr> <td>2</td><td>3</td><td>4</td><td>5</td><td>6</td><td>7</td><td>8</td> <td>4</td><td>5</td><td>6</td><td>7</td><td>8</td><td>9</td><td>10</td> </tr> <tr> <td>9</td><td>10</td><td>11</td><td>12</td><td>13</td><td>14</td><td>15</td> <td>11</td><td>12</td><td>13</td><td>14</td><td>15</td><td>16</td><td>17</td> </tr> <tr> <td>16</td><td>17</td><td>18</td><td>19</td><td>20</td><td>21</td><td>22</td> <td>18</td><td>19</td><td>20</td><td>21</td><td>22</td><td>23</td><td>24</td> </tr> <tr> <td>23</td><td>24</td><td>25</td><td>26</td><td>27</td><td>28</td><td>29</td> <td>25</td><td>26</td><td>27</td><td>28</td><td>29</td><td>30</td><td>31</td> </tr> <tr> <td>30</td><td>31</td><td></td><td></td><td></td><td></td><td></td> <td></td><td></td><td></td><td></td><td></td><td></td><td></td> </tr> </table>		MAY 2021							JULY 2021							S	M	T	W	T	F	S	S	M	T	W	T	F	S							1						1	2	3	2	3	4	5	6	7	8	4	5	6	7	8	9	10	9	10	11	12	13	14	15	11	12	13	14	15	16	17	16	17	18	19	20	21	22	18	19	20	21	22	23	24	23	24	25	26	27	28	29	25	26	27	28	29	30	31	30	31													
MAY 2021							JULY 2021																																																																																																																
S	M	T	W	T	F	S	S	M	T	W	T	F	S																																																																																																										
						1						1	2	3																																																																																																									
2	3	4	5	6	7	8	4	5	6	7	8	9	10																																																																																																										
9	10	11	12	13	14	15	11	12	13	14	15	16	17																																																																																																										
16	17	18	19	20	21	22	18	19	20	21	22	23	24																																																																																																										
23	24	25	26	27	28	29	25	26	27	28	29	30	31																																																																																																										
30	31																																																																																																																						

JUNE 2021

ABBREVIATIONS USED
IN THIS PUBLICATION

Plainview-Old Bethpage John F. Kennedy HS
Howard B. Mattlin Middle School
Plainview-Old Bethpage Middle School
Old Bethpage Elementary School

HS
MMS
POBMS
OB

Judy Jacobs-Parkway Elementary School
Pasadena Elementary School
Stratford Road Elementary School
Religious Holiday

JJP
PAS
SR


July 2021

SUNDAY	MONDAY	TUESDAY	WEDNESDAY	THURSDAY	FRIDAY	SATURDAY
<p>JUNE 2021</p> <p>S M T W T F S</p> <p>1 2 3 4 5</p> <p>6 7 8 9 10 11 12</p> <p>13 14 15 16 17 18 19</p> <p>20 21 22 23 24 25 26</p> <p>27 28 29 30</p>	<p>AUGUST 2021</p> <p>S M T W T F S</p> <p>1 2 3 4 5 6 7</p> <p>8 9 10 11 12 13 14</p> <p>15 16 17 18 19 20 21</p> <p>22 23 24 25 26 27 28</p> <p>29 30 31</p>			1	2	3
4	5	6	7	8	9	10 Independence Day
11	12	13	14	15	16	17
18	19	20	21	22	23	24
25	26	27	28	29	30	31

August 2021

SUNDAY	MONDAY	TUESDAY	WEDNESDAY	THURSDAY	FRIDAY	SATURDAY																																																																																																			
1	2	3	4	5	6	7																																																																																																			
8	9	10	11	12	13	14																																																																																																			
15	16	17	18	19	20	21																																																																																																			
22	23	24	25	26	27	28																																																																																																			
29	30	31				<table style="font-size: small; border-collapse: collapse;"> <thead> <tr> <th colspan="7">JULY 2021</th> <th colspan="7">SEPTEMBER 2021</th> </tr> <tr> <th>S</th><th>M</th><th>T</th><th>W</th><th>T</th><th>F</th><th>S</th> <th>S</th><th>M</th><th>T</th><th>W</th><th>T</th><th>F</th><th>S</th> </tr> </thead> <tbody> <tr> <td></td><td></td><td></td><td></td><td>1</td><td>2</td><td>3</td> <td></td><td></td><td></td><td>1</td><td>2</td><td>3</td><td>4</td> </tr> <tr> <td>4</td><td>5</td><td>6</td><td>7</td><td>8</td><td>9</td><td>10</td> <td>5</td><td>6</td><td>7</td><td>8</td><td>9</td><td>10</td><td>11</td> </tr> <tr> <td>11</td><td>12</td><td>13</td><td>14</td><td>15</td><td>16</td><td>17</td> <td>12</td><td>13</td><td>14</td><td>15</td><td>16</td><td>17</td><td>18</td> </tr> <tr> <td>18</td><td>19</td><td>20</td><td>21</td><td>22</td><td>23</td><td>24</td> <td>19</td><td>20</td><td>21</td><td>22</td><td>23</td><td>24</td><td>25</td> </tr> <tr> <td>25</td><td>26</td><td>27</td><td>28</td><td>29</td><td>30</td><td>31</td> <td>26</td><td>27</td><td>28</td><td>29</td><td>30</td><td></td><td></td> </tr> </tbody> </table>		JULY 2021							SEPTEMBER 2021							S	M	T	W	T	F	S	S	M	T	W	T	F	S					1	2	3				1	2	3	4	4	5	6	7	8	9	10	5	6	7	8	9	10	11	11	12	13	14	15	16	17	12	13	14	15	16	17	18	18	19	20	21	22	23	24	19	20	21	22	23	24	25	25	26	27	28	29	30	31	26	27	28	29	30		
JULY 2021							SEPTEMBER 2021																																																																																																		
S	M	T	W	T	F	S	S	M	T	W	T	F	S																																																																																												
				1	2	3				1	2	3	4																																																																																												
4	5	6	7	8	9	10	5	6	7	8	9	10	11																																																																																												
11	12	13	14	15	16	17	12	13	14	15	16	17	18																																																																																												
18	19	20	21	22	23	24	19	20	21	22	23	24	25																																																																																												
25	26	27	28	29	30	31	26	27	28	29	30																																																																																														

Student Registration

Kindergarten registration takes place starting in January for the full-day kindergarten classes beginning in September. Parents of youngsters who will be five years old by December 31 should complete the kindergarten census form found on the District Website, in the POB Herald, Pennysaver, and Educational Horizons, the district newsletter. After receipt of the Kindergarten Census form, the family will receive a registration packet complete with instructions, contact information, and necessary requirements to register. Each child is registered by scheduled appointment by the District Registrar.

At registration, parents must furnish proof of residency and proof of age (original birth certificate, baptismal record or passport). As required by law, proof of immunization and a New York State physical are necessary.

Bus Transportation

The Bus Transportation Policy for the 2020-2021 school year is:

All K-12 students are eligible for bus transportation.

Bus Schedule

School bus stops and time schedules can be obtained by accessing the Parent Portal or by contacting the Transportation Office at (516) 434-3074.

Transportation Requests Due April 1, 2021

In accordance with New York State Education Law and Board of Education policy, all requests for transportation of children to private and parochial schools for the 2021-2022 school year must be submitted in writing no later than April 1, 2021. Transportation request forms can be obtained from the Transportation Office, Administration Building, Howard B. Matlin Middle School, at the Transportation website www.pobschools.org/page/6000 or by calling (516) 434-3074.

Transportation authorization is not automatic or continuous from one school year to the next. Requests must be filed each year for each child requiring such transportation. A parent who plans to apply, or who has applied to private or parochial schools and is awaiting acceptance, should complete an application for each school the child may attend.

The application(s) must be submitted no later than April 1, 2021. In this way, the district may include the cost of transporting the child in the operating budget.

The policy of the Board of Education is to provide transportation to private and parochial schools no more than fifteen (15) miles from the child's home.

Student Activities

A wide range of planned activities that take place outside of regular school hours is available to students according to their interests and abilities. Such activities include sports, debates, plays, clubs, musical performances, social events, and additional clubs organized as student interest indicates the need. Information on such activities is available from individual schools, and where applicable, activities are described in student handbooks and on our website. Please check back regularly for updates.

Students' Record Policy

Parents and eligible students who are over 18 years of age or older have the following rights under the Family Educational Rights and Privacy Act (FERPA). These include the right to:

1. Be informed about the Family Educational Rights and Privacy Acts rights.
2. Inspect and review the student's education record.
3. Exercise a limited control over other peoples' access to the student's education record.
4. Seek to correct the student's educational record, in a hearing, if necessary.
5. Report violations of the Family Educational Rights and Privacy Act to the Department of Health Education and Welfare.

Under the Family Educational Rights and Privacy Act, no personally identifiable information about any student, other than information classified as student directory information (i.e. name, address, grade, school, photographs) may be released to a particular person or agency without the written consent of the parent. A parent who wishes to restrict access to directory information must inform the principal in

writing by November 1, 2020. In the absence of such a request, directory information will be made available to an outside group upon the principal's or district's discretion, including the posting of student pictures on the school district website. However, parental consent is not required for disclosure of any student records to school officials with legitimate educational interests. In addition, upon request of another school district in which the student seeks to enroll, the district will disclose education records.

FERPA also enables parents of students to review, obtain copies (for a reasonable fee) and challenge the accuracy or fairness of the students' educational records. Information regarding specified procedures to obtain access to educational records can be obtained through the office of each school or from the Assistant Superintendent for Human Resources. Complaints regarding the district's failure to make records available or to respond adequately to challenges about accuracy or fairness should be forwarded to the Superintendent's office. Subsequent complaints may be filed in writing to The Family Policy Compliance Office, US Dept. of Education, 400 Maryland Ave., SW, Washington, DC 20202-5901.

Code of Conduct – BOE Policy #5300

Please note that our Code of Conduct has been revised to reflect the most recent New York State changes to the Dignity for All Students Act. Please check our website at <http://www.pobschools.org/domain/462> to access the complete version.

The Board of Education is committed to providing a safe and orderly school environment where students receive and district personnel deliver quality educational services without disruption or interference. Responsible behavior by students, teachers, other district personnel, parents and other visitors is essential to achieving this goal.

In accordance with the Dignity for All Students Act and the District's Dignity for All Students Act Policy 0115 and Regulation 0115R, students have a right to be free from harassment, bullying, including cyberbullying and/or discrimination, including but not limited to harassment, bullying, including cyberbullying and/or discrimination based on a person's actual or perceived race, color, weight, national origin, ethnic group, religion, religious

practice, disability, sexual orientation, gender/gender identity or sex, by school employees or students on school property, at a school function and/or off school property where such harassment, bullying, including cyberbullying and/or discrimination creates or would foreseeably create a risk of substantial disruption within the school environment, where it is foreseeable that the conduct, threats, intimidation or abuse might reach school property.

The district has a long-standing set of expectations for conduct on school property and at school functions. These expectations are based on the principles of civility, mutual respect, citizenship, character, tolerance, honesty and integrity.

The Board recognizes the need to clearly define these expectations for acceptable conduct on school property, to identify the possible consequences of unacceptable conduct, and to ensure that discipline when necessary is administered promptly and fairly. To this end, the Board adopted a code of conduct.

Unless otherwise indicated, this code applies to all students, school personnel, parents and other visitors when on school property or attending a school function.

Student Rights

The district is committed to safeguarding the rights given to all students under state and federal law. In addition, to promote a safe, healthy, orderly and civil school environment, all district students have the right to:

1. In accordance with the Dignity for All Students Act, the District's Dignity for All Students Act Policy 0115 and Regulation 0115R, be free from harassment, bullying, including cyberbullying, and/or discrimination by school employees or students including but not limited to harassment, bullying, including cyberbullying, and/or discrimination based on a person's actual or perceived race, color, weight, national origin, ethnic group, religion, religious practice, disability, sexual orientation, gender/gender identity or sex.

2. The opportunity to take part in all district activities free of prohibited discrimination, harassment, and bullying in conformity with the law regardless of actual or perceived race, color, weight, disability, national origin, ethnic group, religion practice, gender, sex or sexual orientation or disability.
3. Present their version of the relevant events to school personnel authorized to impose a disciplinary consequence in connection with the imposition of a penalty.
4. Access school rules and, when necessary, receive an explanation of those rules from school personnel.
5. Nothing herein shall be construed to prohibit a denial of admission into, or exclusion from, a course of instruction based on a person's gender that would be permissible under Education Law Sections 3201-a or 2854(a) and Title IX of the Education Amendments of 1972 (20 USC Section 1681, et seq.) or to prohibit, as discrimination based on disability, actions that would be permissible under Section 504 of the Rehabilitation Act of 1973 and/or the Americans with Disabilities Act.

All district students have the responsibility to:

1. Contribute to maintaining a safe and orderly school environment that is conducive to learning and to show respect to other persons and to property and refrain from any act of harassment, bullying, including cyberbullying, and/or discrimination including but not limited to any act of harassment, bullying, including cyberbullying, and/or discrimination based on actual or perceived race, color, weight, national origin, ethnic group, religion, religious practice, disability, sexual orientation, gender/gender identity, or sex.
2. Be familiar with and abide by all district policies, rules and regulations dealing with student conduct.
3. Attend school every day unless they are legally excused and be in class, on time, and prepared to learn.

4. Work to the best of their ability in all academic and extracurricular pursuits and strive toward their highest level of achievement possible.
5. React to direction given by teachers, Administrators and other school personnel in respectful, positive manner.
6. Work to develop mechanisms to control their anger.
7. Ask questions when they do not understand.
8. Seek help in solving problems.
9. Dress appropriately for school and school functions.
10. Accept responsibility for their actions.
11. Conduct themselves as representatives of the district when participating in our attending school-sponsored extracurricular events and to hold themselves to the highest standards of conduct, demeanor, and sportsmanship.
12. Tell a responsible adult if one hears that another student is going to cause harm to others.

Student Dress Code

All students are expected to dress in a manner that, in the judgment of the faculty and administration, is safe, appropriate and does not disturb or interfere with the educational process. The wearing of hats, clothing or attire which bears items that are vulgar, obscene, libelous or denigrate others on account of race, color, religion, creed, national origin, gender, sexual orientation or disability are prohibited. Additionally, dress should not promote or endorse the use of alcohol, tobacco or illegal drugs, or gang related affiliation, or encourage other illegal or violent activities. Furthermore, all underwear must be completely covered. Students that violate the dress code shall be required to modify their appearance by covering or removing the offending item and, if necessary or practical, replace it with an acceptable item. Any students who refuses to do so shall be subject to appropriate disciplinary action.

Prohibited Student Conduct

(see full list on district website)

The Board of Education expects all students to conduct themselves in an appropriate and civil manner with regard to the rights and welfare of other students, district personnel and other members of the school community, and other individuals lawfully on school property and with regard to the care of school facilities and equipment.

The Board recognizes the need to make its expectations for student conduct while on school property or engaged in a school function specific and clear. The rules of conduct listed below are intended to do that and focus on safety and respect for the rights and property of others. Students who will not accept responsibility for their own behavior or students who violate this Code of Conduct's school policies and rules, and/or violate Federal, New York State or Nassau County law will be required to accept the consequences for their conduct which may include disciplinary penalties.

Students may be subject to disciplinary action up to and including suspension from school, when they:

- A. Engage in conduct that is disorderly.
- B. Engage in conduct that is insubordinate.
- C. Engage in conduct that is disruptive.
- D. Engage in conduct that is violent.
- E. Engage in any on or off-campus conduct that endangers the safety, morals, physical or mental health, and welfare of others or substantially disrupts or interferes with the educational process or school environment.
- F. Engage in misconduct while on a school bus.
- G. Engage in any form of academic misconduct.

Reporting Violations

All students are expected to promptly report violations of the code of conduct to a teacher, guidance counselor, the building principal or his or her designee. Any student observing a student possessing a weapon, alcohol or illegal substance on school property or at a school function shall report this information immediately to a teacher, the building principal, the principal's designee or the superintendent.

In order for the District to effectively enforce the District's Dignity for All Student's Act Policy 0115 and Regulation 0115R, it is essential that all victims and persons with knowledge of harassment, bullying, and/or cyberbullying or similar behavior report it immediately in accordance with Dignity for All Student's Act Policy 0115 and Regulation 0115R.

Disciplinary Consequences

Students who are found to have violated the district's Code of Conduct may be subject to the following consequences, either alone or in combination.

1. Oral warning
2. Written warning
3. Written notification to parent
4. Detention
5. Suspension from transportation
6. Suspension from athletic participation
7. Removal/suspension from a specific social event, extracurricular activity or privilege
8. In-school suspension
9. Removal from classroom
10. Short-term (five days or less) suspension from school
11. Long-term (more than five days) suspension from school
12. Permanent suspension from school

Discipline of Students with Disabilities

The Board recognizes that it may be necessary to suspend, remove or otherwise discipline students with disabilities to address disruptive or problem behavior.

The Board also recognizes that students with disabilities have certain procedural protections whenever school authorities intend to impose discipline upon them. The Board is committed to ensuring that the procedures followed for suspending, removing or otherwise disciplining students with disabilities are consistent with the procedural safeguards required by applicable laws and regulations. This code of conduct affords students with disabilities

subject to disciplinary action no greater or lesser rights than those expressly afforded by applicable federal and state law and regulations. In any instance where this Code of Conduct differs or is inconsistent with federal or state law or regulation, the federal or state law or regulation is controlling.

Visitors to the Schools

The building principal or his/her designee is responsible for all persons in the building and on school grounds. For these reasons, the following rules apply to visitors to the schools:

1. Anyone who is not a regular staff member or student at a particular school will be considered a visitor.
2. All visitors must contact the building at least 30-minutes in advance of the planned visit to a school.
3. All visitors to the school must enter through the designated point of entry (main entrance) and immediately report to the security desk to sign the visitor's register.
4. All visitors are required to present photo identification and will be issued a visitor's identification badge, which must be worn at all times while in the school or on school grounds.
5. The visitors must return the visitor's identification badge to the security desk or principal's office before leaving the building.
6. Visitors attending school functions that are open to the public, such as parent-teacher organization meetings or public gatherings, are not required to register.
7. Any unauthorized person on school property will be reported to the principal or his/her designee. Unauthorized persons will be asked to leave. The police may be called if the situation warrants.
8. All visitors are expected to abide by the rules for public conduct on school property contained in this Code of Conduct.

Public Conduct on School Property

The district is committed to providing an orderly, respectful environment that is conducive to learning. To create and maintain this kind of an environment, it is necessary to regulate public conduct on school property and at school functions. For purposes of this section of the code, "public" shall mean all persons when on school property or attending a school function including students, teachers and district personnel.

The restrictions on public conduct on school property and at school functions contained in this code are not intended to limit freedom of speech or peaceful assembly. The district recognizes that free inquiry and free expression are indispensable to the objectives of the district. The purpose of this code is to maintain public order and prevent abuse of the rights of others. All persons on school property or attending a school function shall conduct themselves in an orderly and lawful manner. In addition, all persons on school property or attending a school function are expected to be properly attired for the purpose they are on school property.

Communicating with Parents

Report cards are electronically issued to elementary parents on a trimester basis. For grades 5-12, they are posted quarterly. (Please see calendar for dates). Access can be obtained through the Parent Portal. If you do not have an account, please contact the main office of your child's school for further information on access to the Parent Portal.

Parents are urged to discuss these reports with their children. When a child is experiencing difficulties, parents should contact the child's teacher and/or guidance counselor to determine the reason for the difficulties so that a plan for improvement may be developed.

In case of a school or district emergency, the district utilizes an electronic system called School Messenger to send telephone, text and email messages to parent/guardians. Please be sure your e-mail and phone numbers are up-to-date in the Parent Portal.

If you have questions or concerns, please contact the main office of your child's school.

Attendance Policy (in-school)

The Plainview-Old Bethpage School District is committed to the success of all its students. A critical component of academic success is coming to school on a regular, consistent basis. Students who are in school each day, all day, learn in a consistent, orderly way. They apply the knowledge they have gained one day to the new insights and understanding they will gain in the next day. A disruptive attendance pattern interferes with the continuity of instruction that is essential to the learning process. There is

simply no substitute for being in class: to listen, to participate, to question, to experiment, to challenge. The stimulation of being in a classroom with other learners, guided by a knowledgeable, insightful teacher, is at the core of a sound education. Learning builds day by day, and consistent attendance is vital to make learning meaningful.

In order to encourage students to achieve excellence in their attendance habits, and thereby provide themselves with the best opportunity to succeed in school, the Board of Education has adopted the following attendance policy.

In accordance with New York State Law, the Board of Education requires that students attend school full time from the age of six (6) years old until the last day of the school year in which they turn sixteen (16), unless the student has completed an approved four-year high school course of study.

The following is a summary of the district's attendance policy. The full text is available from your school principal, or on the district's web site: www.pobschools.org.

Excused and Unexcused Absences

If a student is absent from school for all or part of the school day, the student must provide a reason for the absence to the building principal or his/her designee. The building principal or his/her designee shall then determine whether the absence is considered excused or unexcused.

Excused Absences

A. The district recognizes the following absences as "excused" absences:

- Family death, illness, or emergency
- Student illness
- Chronic/Extended Illness
- Pre-arranged appointments with the court, social service agencies or other state agencies as well as appointments with health care providers that cannot be scheduled outside school hours.
- Religious observances, exclusive of religious instructions
- Approved college visits (with documentation)

- Suspensions
- Exceptional circumstances: The principal may approve a pre-arranged absence where the absence from attendance is in the best interests of the student and his/her family. Approval for such absences must be requested of the principal in writing. In extenuating circumstances that are supported by adequate documentation, the principal may approve an exceptional circumstance after it has occurred.

B. Documentation of Absences

Absences for any of the aforementioned reasons may be considered excused by the building principal or his/her designee upon receipt of a written, signed explanation from the student's parent(s)/person(s) in parental relation, together with any supporting documentation that may be required. This information should be submitted to the school immediately by the student or parent/person in parental relation upon return from his/her absence and in no case later than five (5) school days upon the student's return.

C. Make-up Work for Excused Absences

Students with properly excused absences will be given the opportunity and are expected to make up all missed work. It is the responsibility of students to arrange Make-up work/tests with their teacher. All work missed must be satisfactorily completed by a date set by the student's teacher(s) for the class(es) in which the absence(s) occurred. Students who fail to make up all missed work resulting from an excused absence will have that absence converted to an unexcused absence.

Unexcused Absences

Absences for any reason other than those set forth as "excused absences" under this policy, shall be considered "unexcused".

Students who leave early or arrive late for any other reason than those set forth as "excused absences" under the policy, shall be considered "unexcused".

Nonattendance Disciplinary Sanctions

Denial of Course Credit

A high school student will be denied course credit when he/she has exceeded eighteen (18) absences for a full year course or exceeding (9) absences for a half year course exclusive of absences for approved school sponsored trips and activities and pre-arranged school appointments.

However, if the absences are determined to be the result of “unexcused” absences i.e. truancy/cutting, a student will be denied credit when he/she has exceeded six (6) “unexcused” absences per full year course or exceeded four (4) “unexcused” absences per half year.

In the middle school, 7th and 8th grade students who fall below the minimum standards for attendance will be given a grade of “incomplete.” Students given an incomplete grade must attend summer school to earn a final grade. For courses not offered in summer school, students must satisfactorily complete, over the summer, an independent project under the supervision of the principal of his/her designee.

In summer school, absences in excess of three (3) will result in denial of credit. Lateness of less than fifteen minutes will be considered $\frac{1}{4}$ absence, and those in excess of fifteen minutes will be considered $\frac{1}{2}$ absence.

Other Disciplinary Sanctions Include:

- Ineligibility for co-curricular and interscholastic activity
- Ineligibility for driver’s education
- Detention or in-school suspension
- Ineligibility for student parking
- Ineligibility for summer school registration

Physical Education Attendance

For the most up-to-date attendance policy, please visit our website at www.pobschools.org. Students with **three (3) or more unexcused absences in a semester** in physical education class will receive a failing grade and be denied credit for physical education for that semester. An unexcused absence will not be allowed to be made up and will result in full loss of credit for the day.

Appeals Process

Students faced with loss of credit in a course due to absence may bring their appeals before the principal or his/her designee no later than five (5) school days after being informed of the decision to withhold credit or invoke sanctions.

An appeal of the principal’s decision may be made to the Superintendent of Schools.

Students with Disabilities

Students with disabilities who receive unexcused absences shall be referred to the CSE or Section 504 team.

Students Past the Age of Compulsory Attendance

A student who is past the compulsory age of attendance may be dropped from enrollment if he/she has been absent for twenty (20) consecutive days.

Class Assignments and Testing on Religious Holidays

Our administrative procedures state that, to the extent possible, testing will be avoided during religious holidays. Students who are absent for religious reasons will be given an opportunity to make-up any missed work, including homework assignments.

Child Care Program

The Child Care Program is open to all district students in Kindergarten through Eighth Grade. It provides before and after school supervision on all days in which school is in session. Each school has its own child care facility enabling the children to remain in their building for the entire day. The before school portion of the program begins at 7:00 AM in each school* and runs until the beginning of the school day. The after school portion begins immediately after the school day ends and runs until 6:00 PM at the Middle Schools*, 6:15 PM at the Elementary Schools.

The Child Care Program provides a choice of cereal with milk in the mornings and a snack with juice in the afternoon. While at child care, the children will be provided an opportunity to do homework and engage in various activities such as arts & crafts, reading, television/movies, or playing outdoors/indoors (weather and space permitting).

Registration for the Program is open year-round

based on availability. Once the program is at capacity we close registration and have a waitlist. Additional information about the Child Care Program may be found on the District’s website or by calling (516) 434-3124.

**Middle School Program is contingent upon registration. The Middle School programs may be combined if there is insufficient registration.*

Half-Day Program

Independent of the regular child care program, the District’s Half-Day Program is open to all district students in Kindergarten through Fourth Grade for a fee. Registration forms for the half days will be emailed home through School Messenger a few weeks prior to the half-day. Additional information for the Half-Day Program can be found on the Child Care page of the District’s website or by calling (516) 434-3124.

Cafeteria

The food service program offered by the Board of Education is a self-sustaining operation. All schools have a complete hot and cold food service.

Emergency Procedures

Lockout – A lockout is executed to secure school buildings and grounds during incidents that pose an imminent concern outside of the school. Mobility within the building continues. Entry to the building is limited through a locked and monitored door.

Lockdown – Lockdown occurs when there is a threat inside the school. No one will be allowed to enter or leave classrooms or the building. All outdoor activities are cancelled until further notice.

Closed Campus – During adverse weather conditions or events occurring that necessitate action, the campus may be closed. All outdoor activities will be cancelled and no one will be permitted to leave or enter the building.



Dangerous Instruments and Weapons in School

The Plainview-Old Bethpage Board of Education, in order to provide a safe and healthy environment where students learn, has adopted a policy prohibiting dangerous instruments and weapons in school.

Dangerous instruments, firearms, chemicals, explosive devices or weapons are prohibited from school grounds, buildings, buses and field trips.

A weapon is any instrument capable of inflicting bodily harm, such as, but not limited to, Swiss army knives, pen knives, razor blades, switchblade knives, gravity knives, pilum ballistic knives, cane swords, electronic dart guns, chukka sticks and Kung Fu stars.

Any student found guilty of bringing a firearm onto school premises shall be suspended for a period of not less than one calendar year, subject to review by the Superintendent. In addition, he/she shall be referred to the appropriate criminal justice or juvenile delinquency authorities.

Students who bring a weapon to school face a Principal's suspension and may be referred for a Superintendent's suspension.

Substance Use/Abuse Policy

It is the policy of the Plainview-Old Bethpage Central School District to promote healthy life styles for students and staff using appropriate instructional strategies and to inhibit the use/abuse of alcohol, tobacco, vaping and other substances within its jurisdiction. Plainview-Old Bethpage is a substance free district in which the use of alcohol, smoking and vaping are prohibited in all school buildings and on school grounds. Therefore, no person may use, possess, sell or distribute alcohol or other substances, nor may use or possess or distribute drug paraphernalia, including e-cigarettes and other vaping apparatus on school property or at school sponsored events, except drugs as prescribed by a physician. Further, any person exhibiting behavior, conduct, or personal or physical characteristics indicative of having used or consumed alcohol or other substances shall be prohibited from entering school grounds or school sponsored events.

Statement on Sexual Harassment

The Board of Education recognizes that harassment of students, employees (including all staff, applicants for employment, both paid and unpaid interns, exempt and nonexempt status, part-time, seasonal, and temporary workers, regardless of immigration status) and certain "non-employees" (which includes contractors, subcontractors, vendors, consultant and other persons providing services pursuant to a contract, or their employees) on the basis of sex, gender and/or sexual orientation is abusive and illegal behavior that harms, targets and negatively impacts the school culture by creating an environment of fear, distrust, intimidation and intolerance. Sexual harassment can include unwelcome sexual advances, requests for sexual favors, and other verbal, nonverbal, or physical conduct of a sexual nature, or verbal, nonverbal or physical aggression, intimidation or hostility that is based on actual or perceived gender and sexual stereotypes. The Board further recognizes that preventing and remedying such harassment in schools is essential to ensure a healthy, nondiscriminatory environment in which students can learn and employees and "non-employees" can work productively.

Sexual harassment is a form of sex discrimination and is unlawful under federal, state, and (where applicable) local law. Sexual harassment includes harassment on the basis of actual or perceived or self-identified sex, sexual orientation, gender identity, gender expression, and transgender status. Sexual harassment of a student can deny or limit the student's ability to participate in or to receive benefits, services, or opportunities from the school's program. Sexual harassment includes unwelcomed conduct which is either of a sexual nature, or which is directed at an individual because of that individual's sex, when:

- a. submission to that conduct is made either explicitly or implicitly a term or condition of an individual's employment or a student's education;
- b. submission to or rejection of such conduct is used as the basis for decisions affecting an individual's employment or a student's education; or
- c. the conduct has the purpose or effect of unreasonably interfering with an employee's or "non-employee's" work or student's school performance or creating an intimidating, hostile

or offensive work or educational environment, even if the complaining individual is not the intended target of the sexual harassment.

The Board is committed to providing an educational and working environment that promotes respect, dignity and equality and that is free from all forms of sexual harassment. To this end, the Board condemns and strictly prohibits all forms of sexual harassment on school grounds, school buses and at all school-sponsored activities, programs and events, including those that take place at locations outside the district, or outside the school setting if the harassment impacts the individual's education or employment in a way that violates their legal rights, including when employees and "non-employees" travel on district business, or when harassment is done by electronic means (including on social media).

If you believe you have been subjected to or witnessed sexual harassment, you are encouraged to report the harassment to a principal, supervisor, or Title IX coordinator so we can take action.

Our complete policy may be found:

[https://www.boarddocs.com/ny/pobcsd/Board.nsf/files/B6VHQP49A0EF/\\$file/Sexual%20Harassment%20Pol.%20Current%206121.and.7531.New%200110.Nov.2018.pdf](https://www.boarddocs.com/ny/pobcsd/Board.nsf/files/B6VHQP49A0EF/$file/Sexual%20Harassment%20Pol.%20Current%206121.and.7531.New%200110.Nov.2018.pdf)

Our Complaint Form may be found:

[https://www.boarddocs.com/ny/pobcsd/Board.nsf/files/B6VHVF4A535D/\\$file/SEXUAL%20HARASSMENT%20EXHIBIT.0110.Nov.2018.pdf](https://www.boarddocs.com/ny/pobcsd/Board.nsf/files/B6VHVF4A535D/$file/SEXUAL%20HARASSMENT%20EXHIBIT.0110.Nov.2018.pdf)

Non-Discrimination Regulations

The Plainview-Old Bethpage School District, under the requirements of TITLE IX, Part 86, does not discriminate on the basis of gender in the educational program or activities which it operates either in the employment of personnel or the administration of students.

Inquiries regarding our sexual harassment or non-discrimination policies may be made to our Title IX Compliance Officers; Ms. Laurie Lynn, Director of Guidance at (516) 434-3150, and Mr. Christopher Donarummo, Assistant Superintendent for Student Services and Safety at (516) 434-3074.

The Plainview-Old Bethpage Central School District, Plainview, New York 11803 hereby gives notice that it does not discriminate on the basis of disability in violation of ADA or section 504 of the REHABILITATION ACT OF 1973. The School district further gives notice that it does not discriminate in admission or access to its programs and activities.

No person shall be denied employment solely because of any physical, mental, or medical impairment which is unrelated to the person's ability to engage in the activities involved in the job for which application has been made.

Inquiries concerning this policy may be referred to the Section 504 Compliance Officer, 106 Washington Ave., Plainview, New York 11803

Health Services and Guidelines

The school nurse is responsible for the planning, coordination, and implementation of a health services program, which meets all the requirements set forth in the laws and Commissioner's regulations. A cumulative health record is maintained for all students. Registered nurses are available for consultation in all matters pertaining to the health and well-being of the students.

Health Examinations

In addition to first aid and physical inspection, nurses keep records of students' physical examinations. All female students in grade 5 and 7 are screened for scoliosis. Male students are screened in grade 9. Referrals are made to private physicians whenever necessary. Vision and Hearing screenings will be done on new entrants, K,1,3,5,7,9 and 11th grades.

Immunization

According to New York State law, students will not be permitted to enter school or school-sponsored programs if they have not met the immunization requirements. Please consult your school nurse for a complete list of diseases requiring immunization.

Contact Information Card

It is most important that the contact information card given to your child at the beginning of the school year be returned to the school nurse, listing the name and telephone number of two responsible adults (one of whom must live in Plainview or Old Bethpage) who

are to be notified if you are not readily available. The individuals you choose for this responsibility should be available to come to school during the day to pick up your child if necessary.
PLEASE UPDATE YOUR CONTACT INFORMATION CARD AS NECESSARY.

Medication

If medication prescribed by your physician must be taken during school hours, please contact the school nurse. The school may not give your child any medication (including over the counter) unless there is written direction by the family physician and parent.

Other

It is not uncommon for schools to have occasional incidents of head lice. Please encourage your child not to share combs, hats and other personal items. The school nurse must be informed immediately if your child has head lice. Parents will be notified by the school nurse should any problems arise. Please contact the school nurse if you have any questions or concerns.

Child Abuse and Maltreatment

Each year more than a million children in the United States are subjected to severe neglect or the agony of physical, sexual, or emotional abuse. To report suspected child abuse or maltreatment, call the NEW YORK STATE CHILD ABUSE HOTLINE at 800-342-3720. The calls are completely anonymous.

Child Find Statement

The Plainview-Old Bethpage Central School District recognizes its responsibility to provide a free and appropriate public education to eligible students with disabilities within its geographical boundaries. The District has a "child find" process that is designed to locate, identify and evaluate children with disabilities residing within its geographical boundaries preschool through grade 12 or through age 21 if they have not received a high school diploma.

If you know of a child who lives within the boundaries of the Plainview-Old Bethpage Central School District and attends school in the District who may be in need of special education and/or related services, please contact the District's Office of Pupil

Personnel Services for further information regarding the referral and evaluation process. If the student is a school age student who attends a non-public private school that is not located within the geographical boundaries of the School District, the student may need to be referred to the school district in which the non-public school is located in order to receive services during the regular school year. Please contact the school district for information regarding time deadlines for request for services.

The District's Child Find process extends to students with physical or mental impairments that substantially limit a major life activity. Such students may be eligible for services or accommodations pursuant to Section 504 of the Rehabilitation Act. Section 504 is a Federal civil rights statute that prohibits discrimination against persons with disabilities and programs receiving Federal financial assistance. Please contact your child's building assistant principal for more information regarding Section 504 eligibility and services.

Title IX Committee Mission Statement

The purpose of this committee is to develop, strengthen, and raise awareness of gender equality through education, communication and athletics.

We accomplish this by securing and promoting celebrations and achievements that foster gender equality, distributing materials, monitoring issues within the school community, and encouraging student participation in all endeavors toward this goal.

Use of School Buildings and Grounds

Non-profit organizations are granted the use of school facilities under appropriate circumstances. At least ten days prior to the date on which a facility is needed, an online application must be filed. Information regarding fees and insurance requirements may be obtained from the Plainview-Old Bethpage CSD website located online under the "District Offices" area in the Office of Buildings and Grounds section. Once on the Office of Buildings and Grounds online site, click on "Community User Requestors Guide." Any questions regarding your application, please call the Buildings and Grounds Office at (516) 434-3110.

Parking on School Grounds

Please be informed, the Nassau County Police Department (NCPD) will ticket, without warning, all vehicles parked illegally. District driveways and parking lots have been posted in accordance with the appropriate Town of Oyster Bay ordinance and Nassau County Parking regulation. Enforcement is now the responsibility of the NCPD.

In general, parking within 20 feet of any district facility, on the curb that is adjacent to any building and within a designated handicapped parking space, without a valid permit, is in violation of the above referenced parking regulations.

Voter Qualifications

A person shall be eligible to vote at any school meeting for the election of school board members, the school district budget, and upon other matters which may be brought before such meeting, who is:

1. A citizen of the United States.
2. Eighteen years of age, or older.
3. A resident within the district for a period of thirty days preceding the meeting of the vote.
4. Any person who is registered to vote for general election purposes (Federal, State or County elections) will be entitled to vote in school district elections without further registration. In summary, you may vote if your name appears on the school district registration lists or on the county registration lists.

Registration dates for new voters are announced through public notices and school district mailings. Residents may register at the Jamaica Avenue School and Administration Offices at Matlin Middle School.

Registration is on May 11, 2021 from 4pm-8pm, unless otherwise specified.

Absentee ballots may be utilized for voting on the school district budget and on any propositions presented, and for voting for members of the Board of Education.

Working Papers

Working papers are required up to age eighteen. They are issued in the School Counseling Department of POBJFK High School, Monday to Friday, 8:00 am to 3:00 pm (except school holidays). Summer hours for July and August are Monday, Wednesday and Friday 8:00am to 1:00pm and Tuesday and Thursday,

8:00 am to 3:00 pm. Applications are required and may be obtained at both middle schools, the high school, as well as the district website. For further information, call (516) 434-3150.

Every Student Succeeds Act (ESSA)

According to the Every Student Succeeds Act, parents can request information regarding the professional qualifications of their child's teacher. Information such as licensing criteria, certification status, undergraduate degree major and graduate certificates, if applicable, can be provided to all parents. Parents wishing to receive this information should contact the principal of their child's school.

Annual Asbestos Notification

In accordance with 40CFR § 763.84.c, regard this statement as the district's annual notification to all staff, workers, students and/or their legal guardians that the district continues to maintain its Asbestos Management Plan (AMP) which documents all performed or planned asbestos related inspections, response actions, and post-response action activities, including periodic re-inspection and surveillance activities within the school district.

A copy of this AMP is available for review and/or inspection at the District's Facilities Office located at 117 Central Park Rd., Plainview, NY 11803

Pesticide Notification

Education Law 409-h requires that all public and private schools in New York State establish a pesticide notification procedure to inform parents about school pesticide practices and provide them the opportunity to be notified when pesticides are applied in their children's schools.

It is the intent of the Plainview-Old Bethpage Central School District to continue to practice Integrated Pest Management (IPM) methods that do not employ the use of pesticides at your child's school whenever possible. To maintain compliance with the requirements of the law, the principal has been designated as the contact person at your child's school and he/she will keep you informed of all relevant issues. In the event the principal is not available, please call our Building and Grounds office (516) 434-3110.

Privately Conducted Activities, Trips and College Tours

Annually, the high school offers a college tour for 10th grade students. Participation is open to 10th grade students in good standing. The selection is done by a lottery. The Plainview-Old Bethpage School District does not sponsor or co-sponsor private enterprises which conduct activities, trips and/or college tours. Should any parent, guardian or student have any questions as to whether or not a trip or activity is school-related or school-sponsored, please contact the building principal.

Pupil Personnel Services

Pupil Personnel Services is a team effort consisting of school guidance counselors, classroom teachers, psychologists, speech and language therapists, special education teachers, social workers, related service providers, AND YOU, THE PARENT, working together to help your child. If you have a question and wish to speak with a member of the department, please call (516) 434-3020.

Parents of students with disabilities who are parentally placed in non-public schools must request special education services in writing to the school district of location by June 1 preceding the school year for which the request for services is made, except when a student is first identified as a student with a disability after the first day of June preceding the school year for which the request is made. In this case the parent must submit the written request for services within 30 days after the student was first identified.

A message for incoming Kindergarten families and new entrants to the POB district: The District provides special education services and programs to students with disabilities pursuant to applicable federal and state laws. Any parent or person in parental relation who suspects that his/her child has a disability may refer the child for an evaluation by the District's Committee on Special Education (CSE) for eligibility for special education services and programs. More detailed information on this process is available in A Parent's Guide to Special Education, which is published on the New York State Education Department's website in English and Spanish. Parents or persons in parental relation should contact the District's Director of Pupil Personnel Services, Dolores Espinosa, at (516) 434-3020 for additional information.

Vocational Education

Commencing with the eleventh grade, students may apply for approved technical or occupational programs in addition to their regular academic subjects. The district cooperates with BOCES in meeting the needs of vocational students. Interested students must notify their counselor by the end of the first marking period of the year prior to attendance. For additional details, parents and students are encouraged to speak with their high school counselor.

Project Challenge – Gifted Program

Plainview-Old Bethpage hosts a gifted program for students who qualify in grades 3 – 7. The program is designed to provide challenging academic experiences in an intellectually and stimulating classroom environment. Students are encouraged to become motivated leaders, productive group members and curious, proficient researchers.

The selection process begins in January each year, with the administration of the OLSAT (IQ) exam for all second graders and selected 3rd and 4th graders with parent permission. Students in grade 3 who qualify (entry level score of 130 on the OLSAT exam inclusive of other measures) attend for a half day per week while students in grade 4-6 attend for one full day per week with a similar qualifying score. The grade 7 students have an option of participating in a Science/Engineering class for one quarter which is a substitute for another course. More information about the program can be found on the district website.

Project Challenge Parent Association

PCPA is a group which seeks to promote and support gifted education and related activities in our school district. Meetings are open to all members of the community.

Adult Education Program

Please consult your Continuing Education brochure for details regarding the fall and spring programs. These programs are designed to appeal to a diversity of needs and interests in the community. Suggestions for new courses are always welcome. For further information, contact the Continuing Education Office at (516) 434-3123.

Plainview-Old Bethpage Senior Citizens, 60 years of age and over, are given a 50% discount on many courses. Proof of age and POB residency is required.

High school seniors may enroll in Adult Education courses at the senior citizen fee. Parental consent and approval of the high school principal and guidance counselor are required.

Art Education

The art education program in Plainview-Old Bethpage is designed to provide K-12 students with opportunities to participate in fine art activities and experiences which will develop their understanding, appreciation and enjoyment of the Visual Arts.

While supporting the New York State Learning Standards for the Arts, art instruction is based on the Basic Elements of Art and Principles of Design; as well as creating, presenting, responding to, and connecting art to personal meaning and external contexts. Art students are exposed to creative opportunities in various mediums and areas of self-expression, and create projects focused on art history and the works of accomplished artists. All K-12 students are exposed to a wide variety of art enrichment programs, museum trips, art exhibitions and contests, as well as exposure to working artists. Students can choose to participate in the advanced Studio in Art courses their 8th grade year.

Elective Visual Art courses are offered to students in grades 9-12, in preparation for AP level Art opportunities. Sequential course offerings include Media Arts, Drawing & Painting, Fashion Design, Photography (Darkroom and Digital), Computer Graphics, Animation/Web/Gaming Design, Advertising and Design, as well as Sculpture and Ceramics.

Music Education

The music education program in Plainview-Old Bethpage is designed to provide students with opportunities to participate in music activities and experiences which will develop their understanding, appreciation and enjoyment of music.

The program includes general music, which is required of all students from kindergarten through 7th grade. This program introduces students to a variety of listening and “hands-on” experiences which draw from the musical elements of rhythm, melody, harmony, form, tone, color and expression. All 4th grade students participate in chorus and all students also have the opportunity to select a band or orchestra instrument for study in 4th grade. Music teachers assist students in selecting an appropriate instrument.

Students can continue to participate in large music groups, including chorus, band and orchestra through 12th grade. Other opportunities exist for students to play in small chamber ensemble groups. Chamber ensemble groups, Jazz ensembles and a cappella performing groups present day and evening school concerts for community enjoyment.

Courses in elective music are offered to student in grade 9 -12. Course offerings include beginning and advanced music theory. High school students receive credit for elective courses and participation in performing music.

Please contact your school's music teacher if you have questions about concert selections.

MAPOB (Music Association of Plainview-Old Bethpage)

The mission of MAPOB is to promote and support music education and related activities in the Plainview-Old Bethpage CSD and community; to promote cooperation among all musicians in the school district; to develop musical skills and the characteristics of good fellowship, self-discipline, and fairness.

Students and community members join together to provide organized support for the music programs in the Plainview-Old Bethpage CSD and community.

Membership is open to all families of students in district schools. This is a wonderful opportunity to show your support and encouragement for your child and music.

PE, Health, Athletics and Recreation

The K -12 Health and Physical Education is designed to have students learn the skills and concepts necessary to pursue a life of health and fitness, while being in an engaging, fun and safe learning environment.

Our elementary physical education program is designed to reinforce and build upon the foundation of concepts in body and space awareness which will be developed through locomotor and non-locomotor physical activities. Through exploration, students will continue to identify how movement affects the body and mind. These experiences will reinforce personal responsibility and behavior. Students will learn that being successful in challenging activities will promote confidence and motivation to become active throughout their life.

Our Middle School Physical Education program is designed to emphasize citizenship, evaluative problem-solving skills, and conflict resolution tactics in physical settings. Understanding the connection between exercise and its emotional benefits will provide students with the foundational practices that will be developed and encouraged throughout their time in school and extend into their adult life. They will also apply learned strategies and concepts to movement, small-sided game play, and other physical activities while using their locomotor skills.

Our High School physical education program is designed to teach the benefits of leading a healthy lifestyle. The grade level outcomes include components of personal wellness and the social-emotional factors that contribute to leading an enjoyable life, extending beyond graduation. An exploration into the different domains of resources and career options are explored. Competency of various motor skills and movement patterns is demonstrated.

As students increase their skill development, they have the opportunity to participate in the Interscholastic Athletic Program, which presently consists of more than 90 teams in grades 7 – 12. Our recreation program includes an intramural program at the middle school level, Friday night recreation for students in grades 5 – 8. Swim Programs are offered for students in our Saturday morning Instructional Swim Program. Saturday afternoon recreational swims are available for the community, while Monday and Wednesday recreational swims are reserved for adults. In addition to these programs we also offer programs for students with disabilities: Funtime, Special Youth and our challenger basketball and soccer programs.

Athletic Booster Club

The Plainview-Old Bethpage Athletic Booster Club acts as the advocates for the Plainview-Old Bethpage student athlete. We start advocating in the 7th grade (the first year for organized school sports), and run through 12th grade. Without your input and support we cannot do as much as we wish to.

We also coordinate events with the school, such as homecoming and BBQ's for various teams, Rose Ceremonies for graduating athletes and the Wall of Fame in the High School hallway.

We have a highly attended end of year varsity dinner, where the booster club gives out scholarships

and the coaches get to speak about their teams and present All-Class through All-American honors.

Please join the booster club in support of our town's student athletes. Your membership allows us to provide everything mentioned above. Flyers with membership information are sent home each year, and our meeting dates are listed on the school calendar. If you have questions about the booster club, please email your inquiry to the Athletic Director.

District Publications

Our district publication, Educational Horizons, is the official publication of the Board of Education and highlights items of interest in our schools such as board and budget information and news about staff, students and alumni. It is mailed to district residents and is posted on our school district website.

Student publications abound in the district. Student handbooks, produced by the high school and the two middle schools, offer rules of conduct, regulations, student rights and responsibilities, and other important information. In addition to the senior yearbook published by the high school, the high school and the middle schools publish their own newsletters and literary magazines.

Other brochures describing programs, courses, college requirements and extra-curricular activities are given to students to take home, or are mailed to parents/residents, and are available online at www.pobschools.org.

Photographs

Photographs and video footage of students are part of the district public relations program and may be included on our school district website. Parental permission is assumed unless the Plainview-Old Bethpage District is contacted in writing by November 1, 2020. Please contact the main office of your child's school with questions and concerns.

Holocaust/Genocide Studies Center

One of the only centers of its kind to be housed in a school library, the Holocaust/Genocide Center located within John F. Kennedy High School is open to all residents during regular school hours and also by appointment. Materials on the Holocaust and other acts of genocide may be borrowed and include books, videos, survivor testimonies, periodicals and pamphlets of interest to children and adults.

Our Radio Station (WPOB)

The Plainview-Old Bethpage Central School District operates a radio station, WPOB 88.5 FM, which airs student produced programs that are educational, informational and entertaining. The station will broadcast public service announcements from community organizations. Contact the department at 434-3185 for details.

Senior Citizens

The Plainview-Old Bethpage School District Senior Citizen Club meets weekly on Fridays at 10am in the Jamaica Avenue School (except for school closing days). Transportation is available, within the district, to and from the Senior Citizen Club for the handicapped or other members who may require transportation. For bus transportation call (516) 937-6424.

The Senior Club welcomes all Seniors 55 and over in the district, in providing a friendly social environment. We provide refreshments, activities that include arts and crafts, card games, monthly bingo, dancing, informational programs and speakers, tours and trips. Classes for art and yoga are also available. For information concerning the club, please call Gilbert Schwab at 516-937-6424.

Parent-Teacher Organizations

The Plainview-Old Bethpage School district is generously and faithfully supported by the Parent-Teacher Associations. Thanks to the PTA's dedication to the welfare of children and the cause of public education, this community has had an outstanding record of public support for the highest quality of education for our students.

The PTA Council serves as a coordinating body that unites the efforts of the seven school-based PTAs and SEPTA. Membership of PTA Council is composed of its Executive Board and delegates elected by each of these PTAs.

The Parent-Teacher Associations seek to bring together the home, the school, and the community in order to develop the cooperation necessary to secure for every child the highest advantages in physical, mental and social education. The PTAs extend a cordial welcome to all parents to join their membership and attend their meetings which are listed in this calendar.

Special Education Parent-Teacher Association (SEPTA) is a group of concerned people interested in

the welfare and education of children with special needs and their families. Anyone with questions or ideas can contact SEPTA members. Everyone is welcome to attend their meetings which are listed in this calendar. To reach the PTA please email PTA@pobschools.org

PTA Council Executive Board, 2020-2021

President.....	Paula Barsky
First Vice President.....	Aliza Aaronson Greenberg
Administrative V.P.....	Donna Lupia
Budget/Financial V.P.....	Sharyn Schwartz
Procedures/By-Laws V.P.....	Sara Bodeker
Founders' Day V.P.....	Lori Anne Casavina
Founders' Day V.P.....	Julie Shishko
Communications V.P.....	Michael Cohen
Recording Secretary.....	Elissa Friedman
Asst. Recording Secretary.....	Hilary Starr
Corresponding Secretary.....	Jennifer Novis
Asst. Corresponding Secretary.....	Kristin Pilatsky
Treasurer.....	Kim Bell
Historian.....	Jennifer Biren
Past President.....	Patrice Finkelstein

PTA Unit Presidents, 2020-2021

Judy Jacobs-Parkway.....	Morgan Bondroff
Judy Jacobs-Parkway.....	Kara Kaplan
Old Bethpage.....	Amanda Hordos
Old Bethpage.....	Tom Schaeffer
Pasadena.....	Andriana Sideris
Pasadena.....	Jaime Vine
Stratford Road.....	Nina Hoch
Stratford Road.....	Marisa Pammer
Mattlin MS.....	Elina Pavic
POBMS.....	Stacey Wallenstein
POBJFK HS.....	Monica Grossman
SEPTA.....	Marina Bournias
SEPTA.....	Jill Cirri
PTA Council.....	Paula Barsky

Community Organizations

The district has many educational, cultural, social, business and service organizations that provide academic scholarship awards and recognition of student participation. Many memorial scholarships are also offered to outstanding students or to those needing financial aid. A partial list of the community organizations follows:

- Benjamin W. Sofe Memorial
- Brian Harley Assa Memorial
- Brooke Zimmerman Memorial
- Concerned Citizens of the POB Community
- Crestwood Country Day School
- Francis L. Phillips, P.E. Engineering Award
- Frisch Financial Scholarship for Excellence in Finance
- Gieir-Levitt Post No 655 of the Jewish War Veterans of the USA, Inc.
- Harlean Cort Memorial
- Jamie Purzak Memorial Scholarship
- Janet Baumgarten Memorial
- Jeffrey Miller Memorial
- Jordan Abramowitz Memorial
- Joshua Golbert Memorial Award in Music
- Karen Smith Memorial Art Scholarship
- Kevin D. Berkowitz Memorial Scholarship
- L.I. Blood Services
- Leonard & Miriam Berkowitz Memorial
- Linda Lippolt Ray of Sunshine Scholarship
- Lucian Veneziano Memorial Scholarship
- Maury D. Golbert Music Award
- Michael Eichenbaum Award
- Michael Secko Memorial Scholarship
- Music Association of Plainview-Old Bethpage
- Northwell Health/Plainview Hospital Scholarship
- NYU Winthrop Hospital Sports Medicine Award
- Opa Grille Award
- Paul Rubin Memorial
- Plainview Bethpage Lion's Club
- Plainview Diner Award
- Plainview Little League
- Plainview P.A.L. Award
- Plainview-Old Bethpage Chamber of Commerce
- Plainview-Old Bethpage JFK HS PTA
- Plainview-Old Bethpage Senior Citizen Club
- Plainview-Old Bethpage Soccer Club
- POB Athletic Booster Club
- Rae Saltzman Scholarship
- Rechler Equity Partners Scholarship
- Residents Against Garbage Expansion (RAGE)
- Rinaldi Scholarship Fund
- Ruth Gaipman Memorial
- Scholar Athlete Legacy Award from the 'Boys of '69'
- SCOPE Education Services Scholarship
- SEPTA Scholarship Award
- Spencer Cares Scholarships
- Stacy's Warriors Scholarships
- Stephanie Handschu Music Memorial Scholarship
- Steven Pollicino Memorial
- Swimmer-Scholar Award
- The Mark Koehler Scholarship
- Trio Hardware Award

Plainview-Old Bethpage Public Library - Your Partner in Learning

Read Learn Explore at the Plainview-Old Bethpage Public Library! We excel at helping students locate, evaluate and utilize information effectively. Providing the school community with a wealth of electronic and print information along with a wide array of services for education and entertainment is what we do best!

WELCOME TO OUR VIRTUAL LIBRARY:

- Download eBooks and audio books
- Stream or download music
- Browse online magazines
- Use the online tutoring service through Tutor.com
- Learn a craft with Creativebug
- Participate in a virtual craft program, cooking class or story time
- Enjoy concerts and lectures online
- Utilize electronic tools for book reports and research papers
- Summer Reading books available online

Library Card Applications are available in the Library or from our website, www.poblib.org.

Library Hours: Monday–Friday 9:00am – 9:00pm
 Saturday 9:30am – 5:30pm
 Sunday 1:00pm – 9:00pm

999 Old Country Road, Plainview, NY 11803
 (516) 938-0077 (T) (516) 433-4645 (F)

www.poblib.org

The Library is fully handicapped accessible.

Questions and Concerns

Should you have questions or concerns about your child's schoolwork, please contact and have discussion with the classroom or subject area teacher as he/she will have more detailed information for you. If you need to share information not pertaining to the classroom instruction or assignments; or, if you have been unsuccessful in resolving a concern with your child's teacher, please contact one of the following: department chairperson, guidance counselor, or principal.

Chain of Communication

Students

We encourage ALL students to express their questions and concerns directly to their teacher and/or guidance counselor or social worker.

Parents

If you are concerned about an issue involving your child's education, experience, or teacher, go directly to the teacher.

Contacting the Teacher

Teachers are available to communicate with students and parents. You can call the school building of your child between the hours of 7:30 am and 4:00 pm, and leave a detailed message for the teacher indicating times in which you can be reached. You can also email your child's teacher with any questions or concerns you may have.

Contacting the Guidance Counselor or Social Worker

If your concerns stem from your child's social/emotional well-being, or the progress in a particular class, please contact the school guidance counselor and/or social worker. These professionals are available between the hours of 7:30 am and 4:00 pm.

In the event that additional clarification is necessary, or if you have not heard back from the teacher within 48 hours (Monday-Friday) by way of phone or email, please use the following chain of communication for further assistance.

ELEMENTARY SCHOOLS

School Building Assistant Principals

If your concerns stem from your child's social/emotional well-being, progress, behavior, class assignment or grades, please contact the school building Assistant Principal.

MIDDLE SCHOOLS & HIGH SCHOOL

School Building Assistant Principals

If your concerns stem from your child's behavior, participation in school, absences, or disciplinary issues, please contact the school building Assistant Principal.

Curriculum Chairs/Directors

If your concerns stem from a classroom practice, grade, or a particular book or assignment, please contact the administrator who oversees the curricular area in question.

Building Principals

Most problems will have been resolved by this point. If you still need to speak with someone about the situation, however, please contact the school building Principal.

All calls to the Principal or Assistant Principals are maintained in a telephone log.

Assistant Superintendents

If your problem has not been resolved through the Principal's office, please contact the appropriate Assistant Superintendent.

- Assistant Superintendent for Business
- Assistant Superintendent for Human Resources
- Assistant Superintendent for Curriculum and Instruction
- Assistant Superintendent for Student Services and Safety

Superintendent of Schools

If your problem has not been resolved through the Assistant Superintendent's offices, please contact the Superintendent of Schools.

Board of Education

If your problem has not been resolved by speaking with the Superintendent of Schools, please contact the Board of Education through the District Clerk.

District Directory (516) 434-3000

Plainview-Old Bethpage John F. Kennedy H.S.

50 Kennedy Drive, Plainview
James Murray, Principal

Philip Farrelly, Assistant Principal
Diana Beltrani, Assistant Principal
Michael Cestaro, Assistant Principal

TBD, Assistant Principal

Attendance Office 434-3147 Main Office 434-3125
Guidance 434-3150 Nurse 434-3210

Plainview-Old Bethpage Middle School

121 Central Park Road, Plainview
Dr. Alice Bowman, Principal

Dorothy Drexel, Kerry Farrell, Assistant Principals

First Alert 434-3344 Main Office 434-3308
Guidance 434-3324 Nurse 434-3318

H.B. Mattlin Middle School

100 Washington Avenue, Plainview
Dr. Joseph Coladonato, Principal

Thomas Schwartz, Dr. Regina M. Buck, Assistant Principals

First Alert 434-3259 Main Office 434-3250
B House 434-3266 C House 434-3282
D House 434-3292 Nurse 434-3253

Stratford Road Elementary School

33 Bedford Road, Plainview
Dr. Alison Clark, Principal

Lynn Winters, Assistant Principal

First Alert 434-3405 Main Office 434-3389
Nurse 434-3397

Old Bethpage Elementary School

1159 Round Swamp Road, Old Bethpage
Suzanne Gray, Principal

Kristin Seidel, Assistant Principal

First Alert 434-3437 Main Office 434-3419
Nurse 434-3428

Judy Jacobs-Parkway Elementary School

300 Manetto Hill Road, Plainview
Gregory Scesney, Principal

Joanna Clampitt, Assistant Principal

First Alert 434-3375 Main Office 434-3358
Nurse 434-3362

Pasadena Elementary School

3 Richard Court, Plainview
Karen Heitner, Principal

Jodi Marchese, Assistant Principal

First Alert 434-3467 Main Office 434-3451
Nurse 434-3459

2020-2021 School Hours

POBJFK High School

7:25am-1:49pm

Extra Help (M-Th)

1:49pm-2:29pm

Extra Curricular/Clubs

2:29pm-3:09pm

H.B. Mattlin Middle School

8:40am-2:50pm

Extra Help/Curricular

2:54pm-3:35pm

Plainview-Old Bethpage Middle School

8:40am-2:50pm

Extra Help/Curricular

2:54pm-3:35pm

Grades K-4 All Schools

9:20am-3:20pm

Administrative Offices

Superintendent of Schools

Dr. Mary T. O'Meara.....434-3001

Assistant Superintendent for Human Resources

Dr. Vincent K. Mulieri.....434-3040

Assistant Superintendent for Business

Richard J. Cunningham.....434-3050

Assistant Superintendent for Student Services & Safety

Christopher T. Donarummo.....434-3074

Assistant Superintendent for Curriculum & Instruction

Joanne F. Mannion.....434-3010

Director of Pupil Personnel Services

Dolores Espinosa.....434-3020

Asst. Directors of Pupil Personnel Services

Jennifer Lott Gr. K-4.....434-3020

Justin Gioia Gr. Pre-K, 5-8.....434-3020

Sandra Parmentier Gr. 9-12.....434-3020

Director of Guidance

Laurie Lynn.....434-3150

Director of Phys. Ed., Athletics & Recreation/Health

Joseph Braico.....434-3100

Director of Art and Digital Instruction

Dr. Ben Wiley.....434-3014

Director of Music

Michael Rodgers.....434-3283

Director of Technology

TBD.....434-3090

Director of Facilities & Operations

Andrew Ward.....434-3110

Transportation Supervisor

Seth Brown.....434-3075

Emergency School Closings

In the event that schools are closed or delayed in opening because of inclement weather or other emergency, the following radio and TV stations will be notified and will make announcements, usually from 7:00am to 9:00am.

WCBS WBAB WKJY WHLI
WALK WINS WGBB Cablevision Ch. 12

Delayed School Openings

(Inclement Weather or Emergency Conditions)

In the event of inclement weather or emergency conditions, the Superintendent of Schools determines whether schools will be closed or there will be a delayed opening of schools.

If it is determined that conditions will improve sufficiently to allow for the arrival of staff and students, the Superintendent may authorize a two-hour (or three-hour) delay in the start of the school day. This alternative to closing schools permits greater flexibility in meeting the 183 day minimum session requirement.

A delayed opening schedule means the following:

1. Classes will start later than normal (see details below) and transportation will be provided two or three hours later than the normal pickup for all district and private schools.
2. Staff, with the exception of Buildings and Grounds and custodial personnel, will report as soon after normal arrival time as possible, but no later than the delayed starting times noted below.
3. In the event of a delayed opening, parents and staff will be notified via School Messenger.

School	Regular Start Time	2-Hour Delayed Start Time	3-Hour Delayed Start Time
POBJFK	7:25am	9:25am	10:25am
MMS	8:40am	10:40am	11:40am
POBMS	8:40am	10:40am	11:40am
OB	9:20am	11:20am	12:20pm
PAS	9:20am	11:20am	12:20pm
JJP	9:20am	11:20am	12:20pm
SR	9:20am	11:20am	12:20pm

Early Dismissal Schedule:

School	Plan A: (Non-Emergency)	Plan B: (Emergency)
	Early Dismissal	Early Dismissal
POBJFK	11:05am	9:40am
MMS	12:05pm	10:40am
POBMS	12:05pm	10:40am
OB	1:05 pm	11:40am
PAS	1:05 pm	11:40am
JJP	1:05 pm	11:40am
SR	1:05 pm	11:40am



Metal Health & Well-being at POB

Northwell/South Oaks Partnership

The Strategic Partnership for Mental Health Services: Northwell/South Oaks is a productive partnership to enhance the access to effective psychiatric supports and services. The partnership will assist with navigating and accessing mental health services for students identified within the school district. Services will include: Psychiatric Evaluation, referral to Care, faculty Professional Development, Professional and discreet ambulance services and clinical support. Questions regarding the partnership can be directed to Dolores Espinosa, K-12 Director of PPS, at (516) 434-3020.

Long Island Crisis Center

The Long Island Crisis Center provides free, confidential, and non-judgmental programs and services to support and empower Long Islanders at critical times in their lives. 24/7 Hotline: (516) 679-1111

North Shore Child and Family Guidance Center, Roslyn

A not-for-profit children's mental health agency offering a variety of services to children (birth-age 24), as well as training for parents. (516) 626-1971

Central Nassau Guidance Center, Hicksville

Services available for people living with mental health and substance use conditions through person-centered integrated treatment. Includes housing and support services. (516) 822-6111

Central Nassau Guidance Mobile Recovery Unit

Anonymous and innovative access to substance use disorder treatment. (516) 396-2778

Mindful Urgent Care, W. Hempstead

Same day psychiatric care and mental health treatment. (516) 505-7200

Cohen's Children's Pediatric Behavioral Health, New Hyde Park

Diagnostic and treatment services for children, birth through adolescence. (516) 802-6100

Say Something Anonymous Reporting System

Say Something Anonymous Reporting System allows you to submit secure and anonymous safety concerns to help identify and intervene upon at-risk individuals BEFORE they hurt themselves or others. You can do this by reporting observed threats, behaviors, actions and harassment.

Visit www.pobschools.org, www.saysomething.net, or call 1-844-5-SAYNOW to submit a tip.

Religious Holidays (R)

August 20, 2020 - Muharram
 August 22, 2020 - Ganesh Chaturthi
 August 28-29, 2020 - Ashura
 September 18-20, 2020 - Rosh Hashanah
 September 27-28, 2020 - Yom Kippur
 October 2-9, 2020 - Sukkot
 October 9-11, 2020 - Shemini Atzeret
 October 10-11, 2020 - Simchat Torah
 October 17-26, 2020 - Navaratri
 October 25, 2020 - Dussehra
 October 29, 2020 - The Prophet's Birthday
 November 1, 2020 - All Saints' Day
 November 2, 2020 - All Souls Day
 November 14, 2020 - Diwali
 November 29, 2020 - Advent- Christian
 December 6, 2020 - St. Nicholas Day
 December 8, 2020 - The Immaculate Conception
 December 10-18, 2020 - Chanukah
 December 25, 2020 - Christmas Day
 January 6, 2021 - Epiphany
 January 7, 2021 - Orthodox Christmas Day
 January 14, 2021 - Orthodox New Year
 January 14, 2021 - Makar Sankranti
 January 27-28, 2021 - TuB'Shevat
 February 12, 2021 - Lunar New Year
 February 16, 2021 - Mardi Gras
 February 17, 2021 - Ash Wednesday
 February 17, 2021 - Lent
 February 25-26, 2021 - Purim
 March 10-11, 2021 - Isra and Mi'raj
 March 11, 2021 - Maha Shivarati
 March 27-April 4, 2021 - Passover
 March 28, 2021 - Palm Sunday
 March 28-29, 2021 - Laylat al Bara'at
 March 29, 2021 - Holi
 April 1, 2021 - Maundy Thursday
 April 2, 2021 - Good Friday
 April 3, 2021 - Holy Saturday
 April 4, 2021 - Easter
 April 12, 2021 - Ramadan
 April 21, 2021 - Rama Navami
 April 29-30, 2021 - Lag B'Omer
 April 30, 2021 - Orthodox Good Friday
 May 2, 2021 - Orthodox Easter
 May 9, 2021 - Laylat al Qadr
 May 12-13, 2021 - Eid al-Fitr
 May 13, 2021 - Ascension Day
 May 17, 2021 - Shavuot
 May 23, 2021 - Pentecost
 May 24, 2021 - Whit Monday
 June 3, 2021 - Corpus Christi



Plainview-Old Bethpage Central School District
Plainview, New York 11803
www.pobschools.org

Excellence in Education

Non-Profit
Organization
U.S. Postage
PAID
Hicksville, N.Y.
Permit 156

*****ECRWSS**
RESIDENT OF
PLAINVIEW-OLD BETHPAGE SCHOOL DISTRICT

